

Blen
PROVENCE



🇮🇹 Vi offre solo prodotti di alta qualità, fabbricati con materiali e componenti di prima scelta, finiti con cura e precisione. Le ns. creazioni sono destinate a restare intatte nel tempo, a non passare di moda, e a rendere la vostra casa piu' calorosa ed accogliente.

🇫🇷 **Bleu Provence** vous offre uniquement des produits de grande qualité, fabriqués avec des matériaux et composants de premier choix, finis avec soin et précision. Nos créations sont destinées à durer dans le temps, à rester indémodables et à rendre votre maison plus chaleureuse et accueillante.

🇬🇧 **Bleu Provence** offers only high quality products, made with first choice materials and components, finished with care and precision. Our creations are designed to last over time, to remain fashion and make your home warm and cozy.

Vasche in ghisa con piedi pag.03

Vasche in ghisa freestanding pag.16

Vasche in ghisa ad incasso pag.34

Rubinetti pag.36

Accessori da bagno pag.50

Specchi pag.54

Appliques pag.56

Scaldasalviette pag.57

Radiatori in ghisa pag.63

Radiatori design pag.65

La ghisa una scelta sicura ed ecologica. Un investimento di qualità per il vs. bagno!

Le vasche in ghisa ritornano prepotentemente nei ns. bagni e non è soltanto per la loro bellezza ma perchè in realtà offrono parecchi vantaggi e qualità che non hanno le vasche in acrilico, acciaio o altre materie, che richiedono un investimento un po' piu' importante ma che poi si dimostra intelligente nel tempo :

- **Una scelta ecologica:** la ghisa smaltata è riciclabile contrariamente all'acrilico
- **Una scelta di igiene:** lo smalto delle vasche offre una resistenza senza paragoni alla proliferazione batterica. Questa è la ragione per cui hotels e ospedali da sempre privilegiano la ghisa nella loro scelta.
- **Una scelta di sicurezza:** la ghisa è un materiale non infiammabile che non emette alcun gas o fumo tossico in caso d'incendio
- **Una scelta contro l'inquinamento sonoro:** la ghisa assorbe al massimo i rumori dell'acqua e del bagno rispetto all'acrilico e ferro.
- **Una scelta che dura nel tempo:** contrariamente all'acrilico, le vasche in ghisa sono indeformabili. Una solidità a prova di tutto e che offre caratteristiche inalterabili nel tempo, una durata e resistenza eccezionale al fuoco, agli urti, e ai prodotti chimici.
- **Una scelta di confort:** le caratteristiche naturali della ghisa offrono una capacità termica massima che vi garantisce la temperatura dell'acqua a lunga durata senza aggiungere acqua calda facendo delle economie.
- **Una manutenzione facile:** materiale denso e non poroso per eccellenza, lo smalto non trattiene né calcaie né altri depositi, facilitando la pulizia. Tutte queste qualità valgono ampiamente il piccolo sovraccosto della ghisa rispetto altri materiali. E poi riportato alla durata di vita del prodotto stesso che può durare fino a 100 anni, il calcolo di convenienza per questo investimento è presto fatto.

La Fonte : un matériau sécuritaire et écologique. Un investissement de choix pour votre salle de bain !

Les baignoires en fonte émaillée reviennent en force dans nos salles de bain...et ce n'est pas uniquement parce qu'elles sont belles et racées. En effet, elles offrent de nombreuses qualités et avantages que n'ont pas les baignoires en acrylique ou en acier et qui, en dépit d'un investissement un peu plus important, en font un choix malin pour ne pas dire indispensable :

- **Un choix écologique :** la fonte émaillée est recyclable contrairement à l'acrylique
- **Un choix sanitaire :** l'émail des baignoires en fonte offre une résistance sans égal à la prolifération bactérienne. C'est pour cette raison qu'hôtels et hôpitaux doivent privilégier la fonte dans leurs choix d'installations sanitaires.
- **Un choix sécuritaire :** la fonte est un matériau ininflammable n'offrant aucun dégagement de gaz ou de fumées toxiques en cas d'incendie
- **Un choix contre la pollution sonore :** la fonte émaillée absorbe un maximum des bruits d'eau et du bain contrairement aux baignoires acryliques ou en acier.
- **Un choix ancré dans le temps :** contrairement à celles en acrylique, les baignoires en fonte sont parfaitement indéformables. D'une solidité à toute épreuve, elles offrent des caractéristiques d'inaltérabilité, de durabilité et une résistance exceptionnelle au feu, aux chocs et aux produits chimiques.
- **Un choix de confort :** les caractéristiques naturelles de la fonte offrent une capacité thermique maximale vous garantissant un bain à bonne température longtemps sans rajout d'eau chaude et aussi par là même de substantielles économies.
- **Un choix d'entretien facile:** matériau dense et non poreux par excellence, l'émail n'accroche ni le calcaire ni d'autres dépôts ce qui facilite grandement son entretien. Toutes ces qualités valent largement le petit surcoût supplémentaire lors de l'acquisition d'une baignoire en fonte comparé à une baignoire en acrylique. Et puis, ramené à la durée de vie d'un tel produit qui peut aller jusqu'à plus de 100 ans, le calcul de rentabilité de son investissement est vite fait.

Enameled cast iron : a safe and ecological material . A smart choice for your bathroom!

Enameled cast iron bathtubs are back for good in our bathrooms ... and this is not only because they are beautiful. Indeed, they offer many features and benefits that do not have the acrylic or steel bathtubs. And despite a slightly larger investment , they do represent a smart if not essential choice for many reasons:

- **An ecological choice:** cast iron is recyclable unlike acrylic. Therefore it does protect our planet!
- **A health choice :** enamel cast iron bathtubs offer unmatched resistance to bacterial proliferation. . It is this essential characteristic that leads hospitals and Palace hotels to favor cast iron bath tubs in their Bathrooms.
- **A safe choice :** the cast is a non flammable material. It does not release gas or toxic fumes in case of fire unlike acrylic
- **An anti noise pollution choice :** Cast iron ideally absorbs all noise of water and bath unlike steel or acrylic. It offers you a quiet bath everyday
- **A long term investment choice :** A rock solid, enameled cast iron offers exceptional features of inalterability, durability and exceptional resistance to fire, impacts and chemicals. They are also perfectly non-deformable unlike those in acrylic
- **A comfort choice:** The natural characteristics of the cast offer maximum thermal capacity.

You keep the assurance of a good bath temperature without addition of hot water or losing the heat too fast like with acrylic tubs.

- **A maintenance easy choice :** The enamel is a dense, non-porous material which does get limestone or other potential deposits. Maintenance and cleaning is therefore very easy. All these qualities are well worth the extra cost when buying a cast iron bathtub compared to acrylic or steel bathtub . And your return on investment is even more obvious when you consider that such product has a life cycle of more than 100 years!

Lavande



Piede Lavande



Piede Vintage



Base ferro battuto

Tecnico

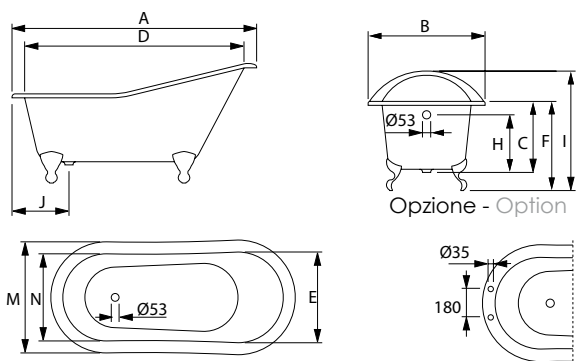
Valvola di scarico disponibile da 63 mm.

Overflow hole available with 63mm

Misure approssimative - Approximate measurements

INFORMAZIONI TECNICHE - TECHNICAL INFORMATION

DIMENSIONI - DIMENSIONS (mm)



1370	1370	765	445	1226	600	582	-	353	779	290	-	740	580	-	-	-	-
1540	1540	765	445	1380	600	582	-	353	779	290	-	740	580	-	-	-	-
1700	1700	760	450	1548	608	580	-	370	795	300	-	730	578	-	-	-	-

A B C D E F G H I J L M N O P Q R

1370		1540		1700	
KG	LT	KG	LT	KG	LT
PESO/WEIGHT	VOL.	PESO/WEIGHT	VOL.	PESO/WEIGHT	VOL.
102	165	120	180	129	205

Lavande *ferro battuto
fer forgé
wrought iron*



Old Lavande



Old Lavande con anelli



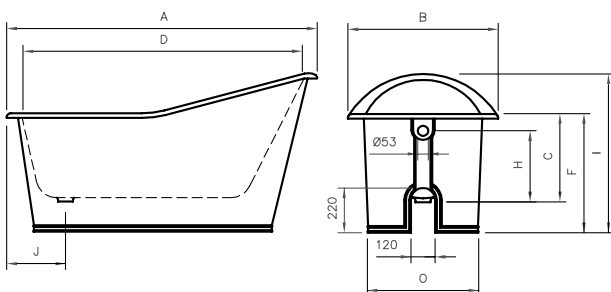
Tecnico

Valvola di scarico disponibile da 63 mm.

Overflow hole available with 63mm

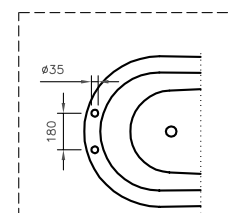
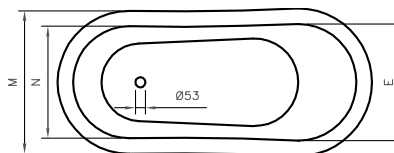
Misure approssimative - Approximate measurements

INFORMAZIONI TECNICHE - TECHNICAL INFORMATION



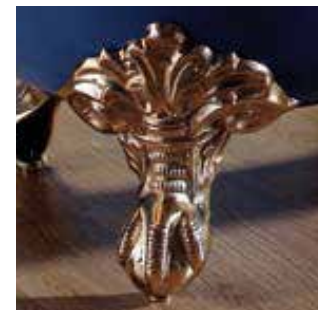
DIMENSIONI - DIMENSIONS (mm)

	A	B	C	D	E	F	G	H	I	J	K	L	M	N	O	P	Q	R
1370	1370	765	445	1226	600	585	-	353	755	290	-	740	580	550	-	-	-	-
1540	1540	765	445	1380	600	585	-	353	755	290	-	740	580	550	-	-	-	-
1700	1700	760	450	1548	608	585	-	370	755	300	-	730	578	550	-	-	-	-



1370		1540		1700	
KG	LT	KG	LT	KG	LT
155	165	163	180	170	205

Vintage



Piede Vintage



Piede Fleur

Tecnico

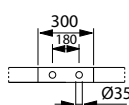
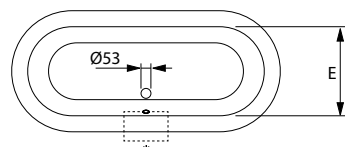
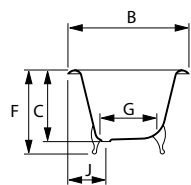
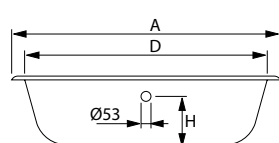
Valvola di scarico disponibile da 63 mm.

Overflow hole available with 63mm

Misure approssimative - Approximate measurements

INFORMAZIONI TECNICHE - TECHNICAL INFORMATION

DIMENSIONI - DIMENSIONS (mm)



1540	1540	780	473	1410	620	585	450	370	-	285	-	-	-	-	-	-	-
1700	1700	780	475	1560	620	585	450	372	-	275	-	-	-	-	-	-	-

A B C D E F G H I J L M N O P Q R

1540

KG	LT
PESO/WEIGHT	VOL.
113	170

1700

KG	LT
PESO/WEIGHT	VOL.
129	190

Vintage su base sur base on base



Tecnico

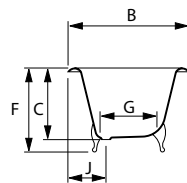
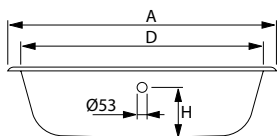
Valvola di scarico disponibile da 63 mm.

Overflow hole available with 63mm

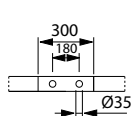
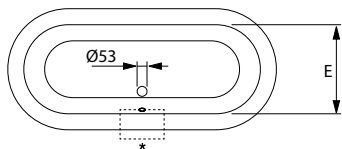
Misure approssimative - Approximate measurements

INFORMAZIONI TECNICHE - TECHNICAL INFORMATION

DIMENSIONI - DIMENSIONS (mm)



Opzione - Option



1540	1540	780	473	1410	620	585	450	370	-	285	-	-	-	-	-	-	-
1700	1700	780	475	1560	620	585	450	372	-	275	-	-	-	-	-	-	-

A B C D E F G H I J L M N O P Q R

1540		1700	
KG	LT	KG	LT
PESO/WEIGHT	VOL.	PESO/WEIGHT	VOL.
113	170	129	190

Anis



Piede Anis



Piede Vintage



Piede Lavande

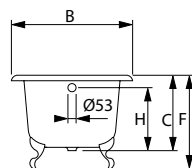
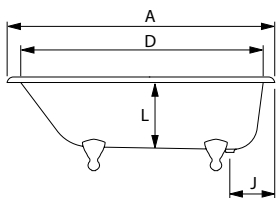
Tecnico

Valvola di scarico disponibile da 63 mm.

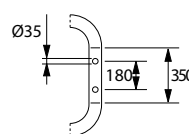
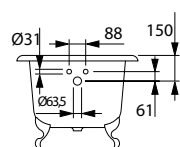
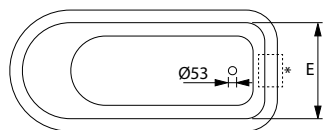
Overflow hole available with 63mm

Misure approssimative - Approximate measurements

INFORMAZIONI TECNICHE - TECHNICAL INFORMATION



Opzione - Option



DIMENSIONI - DIMENSIONS (mm)

1370	1370	765	455	1240	615	590	-	363	-	290	430	-	-	-	-	-	-
1540	1540	770	470	1400	615	610	-	383	-	290	440	-	-	-	-	-	-
1700	1700	775	473	1580	615	610	-	390	-	290	440	-	-	-	-	-	-

A B C D E F G H I J L M N O P Q R

1370		1540		1700	
KG	LT	KG	LT	KG	LT
PESO/WEIGHT	VOL.	PESO/WEIGHT	VOL.	PESO/WEIGHT	VOL.
99	175	117	200	131	225

Anis

su base
sur base
on base



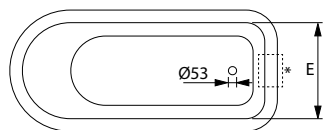
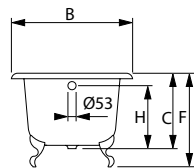
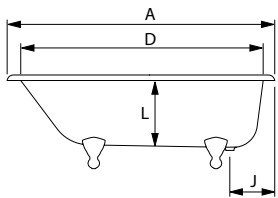
Tecnico

Valvola di scarico disponibile da 63 mm.

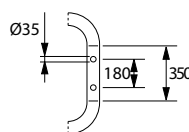
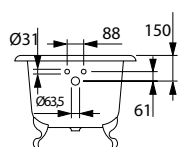
Overflow hole available with 63mm

Misure approssimative - Approximate measurements

INFORMAZIONI TECNICHE - TECHNICAL INFORMATION



Opzione - Option



DIMENSIONI - DIMENSIONS (mm)

1370	1370	765	455	1240	615	590	-	363	-	290	430	-	-	-	-	-	-
1540	1540	770	470	1400	615	610	-	383	-	290	440	-	-	-	-	-	-
1700	1700	775	473	1580	615	610	-	390	-	290	440	-	-	-	-	-	-

A B C D E F G H I J L M N O P Q R

1370		1540		1700	
KG	LT	KG	LT	KG	LT
PESO/WEIGHT	VOL.	PESO/WEIGHT	VOL.	PESO/WEIGHT	VOL.
99	175	117	200	131	225

Thym



Piede Lion



Piede Thym

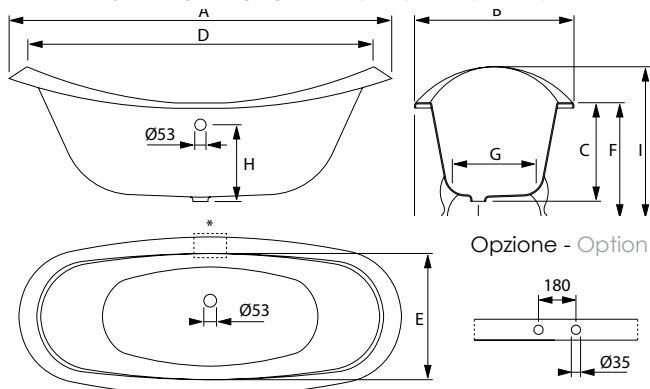
Tecnico

Valvola di scarico disponibile da 63 mm.

Overflow hole available with 63mm

Misure approssimative - Approximate measurements

INFORMAZIONI TECNICHE - TECHNICAL INFORMATION



DIMENSIONI - DIMENSIONS (mm)

	A	B	C	D	E	F	G	H	I	J	L	M	N	O	P	Q	R
1540	1540	750	402	1400	610	535	420	308	730	300	-	-	-	-	-	-	-
1700	1700	760	460	1550	600	595	420	360	770	300	-	-	-	-	-	-	-
1800	1800	770	462	1660	610	595	420	368	790	300	-	-	-	-	-	-	-

1540		1700		1800	
KG	LT	KG	LT	KG	LT
PESO/WEIGHT	VOL.	PESO/WEIGHT	VOL.	PESO/WEIGHT	VOL.
110	175	127	185	139	195

Thym su base sur base on base



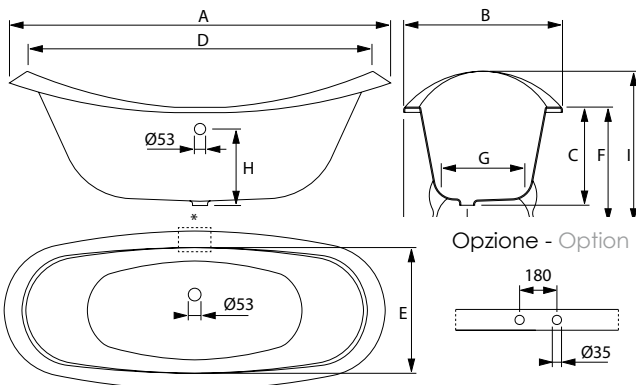
Tecnico

Valvola di scarico disponibile da 63 mm.

Overflow hole available with 63mm

Misure approssimative - Approximate measurements

INFORMAZIONI TECNICHE - TECHNICAL INFORMATION



DIMENSIONI - DIMENSIONS (mm)

	A	B	C	D	E	F	G	H	I	J	L	M	N	O	P	Q	R
1540	1540	750	402	1400	610	535	420	308	730	300	-	-	-	-	-	-	-
1700	1700	760	460	1550	600	595	420	360	770	300	-	-	-	-	-	-	-
1800	1800	770	462	1660	610	595	420	368	790	300	-	-	-	-	-	-	-

1540		1700		1800	
KG	LT	KG	LT	KG	LT
PESO/WEIGHT	VOL.	PESO/WEIGHT	VOL.	PESO/WEIGHT	VOL.
110	175	127	185	139	195

Jasmine



Piede Jasmine



Piede Vintage

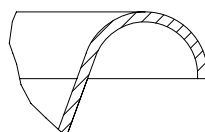
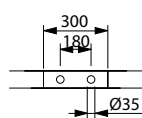
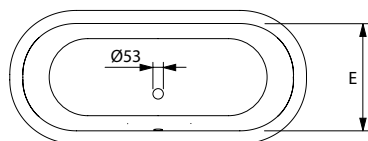
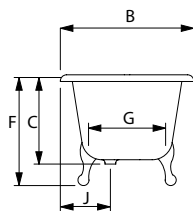
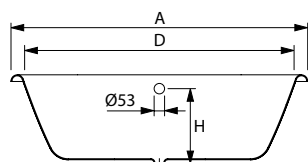
Tecnico

Valvola di scarico disponibile da 63 mm.

Overflow hole available with 63mm

Misure approssimative - Approximate measurements

INFORMAZIONI TECNICHE - TECHNICAL INFORMATION



DIMENSIONI - DIMENSIONS (mm)

1780	1780	800	543	1640	660	675	450	465	-	290	-	-	-	-	-	-	
	A	B	C	D	E	F	G	H	I	J	L	M	N	O	P	Q	R

1700

KG	LT
PESO/WEIGHT	VOL.
154	240

Romarin



Piede Romarin

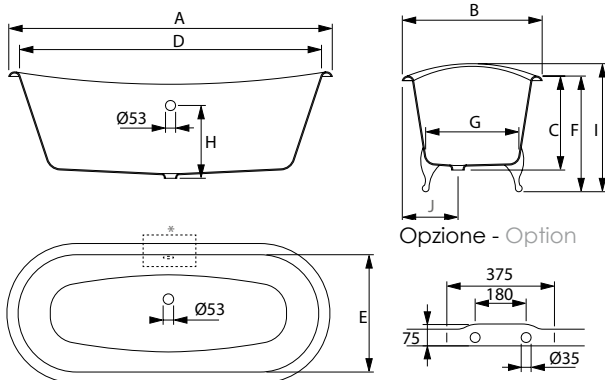
Tecnico

Valvola di scarico disponibile da 63 mm.

Overflow hole available with 63mm

Misure approssimative - Approximate measurements

INFORMAZIONI TECNICHE - TECHNICAL INFORMATION



DIMENSIONI - DIMENSIONS (mm)

1700	1700	680	492	1620	585	620	465	390	675	250	-	-	-	-	-	-	
	A	B	C	D	E	F	G	H	I	J	L	M	N	O	P	Q	R

1700	
KG	LT
PESO/WEIGHT	VOL.
133	215

Quadro



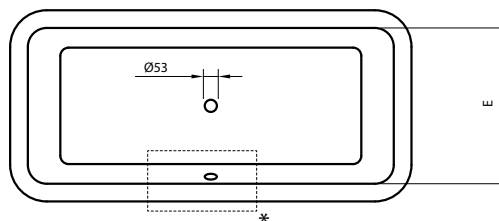
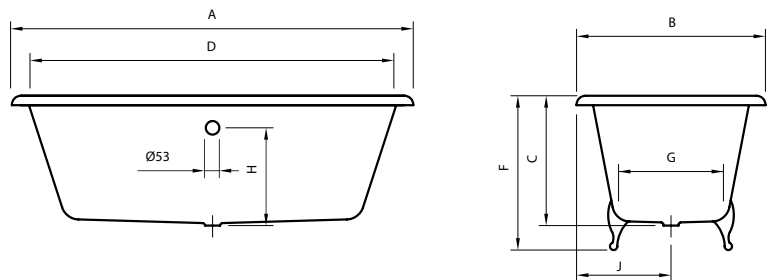


Piede Jasmine

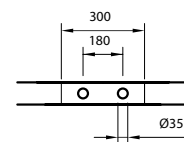
Tecnico

INFORMAZIONI TECNICHE - TECHNICAL INFORMATION

Misure approssimative - Approximate measurements



Opzione - Option






DIMENSIONI - DIMENSIONS (mm)

1700	1700	810	562	1550	660	685	480	460	-	405	-	-	-	-	-	-	
	A	B	C	D	E	F	G	H	I	J	L	M	N	O	P	Q	R

1700

KG	LT
PESO/WEIGHT 124	VOL. 220

-  Vasca in ghisa rettangolare molto profonda.
-  Baignoire en fonte rectangulaire de grande profondeur.
-  Rectangular & deep cast iron bathtub.

Luxury



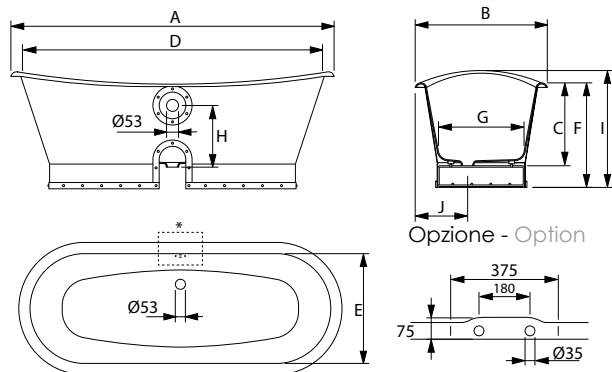
Tecnico

Valvola di scarico disponibile da 63 mm.

Overflow hole available with 63mm

Misure approssimative - Approximate measurements

INFORMAZIONI TECNICHE - TECHNICAL INFORMATION



DIMENSIONI - DIMENSIONS (mm)

1700	1700	680	492	1620	585	635	465	390	695	250	-	-	-	-	-	-	
	A	B	C	D	E	F	G	H	I	J	L	M	N	O	P	Q	R

1700	
KG	LT
PESO/WEIGHT	VOL.
198	215

Luxury rame
cuivre
copper



Antica alluminio
aluminium
aluminum



Antica

alluminio satinato
aluminium mat
aluminum matt



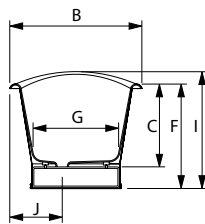
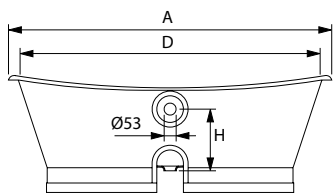
Tecnico

Valvola di scarico disponibile da 63 mm.

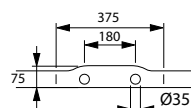
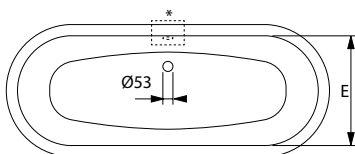
Overflow hole available with 63mm

Misure approssimative - Approximate measurements

INFORMAZIONI TECNICHE - TECHNICAL INFORMATION



Opzione - Option



DIMENSIONI - DIMENSIONS (mm)

1700	1700	680	492	1620	585	635	465	390	695	250	-	-	-	-	-	-	
	A	B	C	D	E	F	G	H	I	J	L	M	N	O	P	Q	R

1700

KG	LT
PESO/WEIGHT	VOL.
198	215

Antica cuoio
cuir
leather



Antica foglia rame
feuille de cuivre
copper foil



Antica ottone
laiton
brass



Antica

colorato
couleur
colour



Trendy

alluminio
aluminium
aluminum



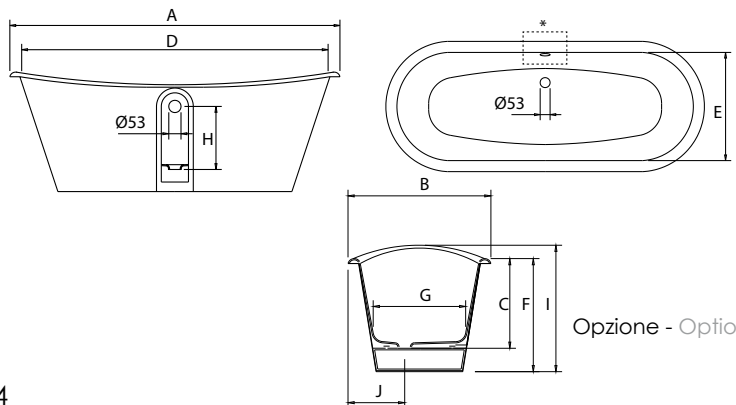
Tecnico

Valvola di scarico disponibile da 63 mm.

Overflow hole available with 63mm

Misure approssimative - Approximate measurements

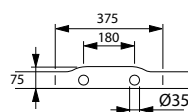
INFORMAZIONI TECNICHE - TECHNICAL INFORMATION



Opzione - Option

DIMENSIONI - DIMENSIONS (mm)

1700	1700	680	492	1620	585	635	465	390	695	250	-	-	-	-	-	-	
	A	B	C	D	E	F	G	H	I	J	L	M	N	O	P	Q	R



1700

KG	LT
PESO/WEIGHT	VOL.
198	215

Trendy acciaio
acier
stainless steel



Shabby



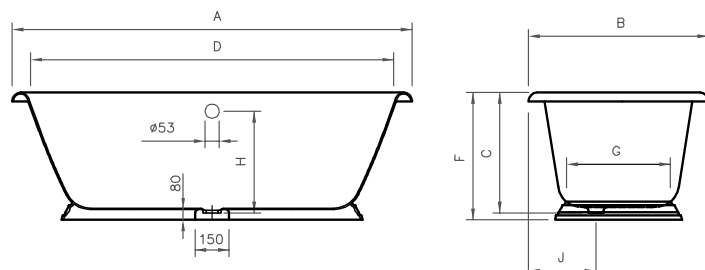
Tecnico

Valvola di scarico disponibile da 63 mm.

Overflow hole available with 63mm

Misure approssimative - Approximate measurements

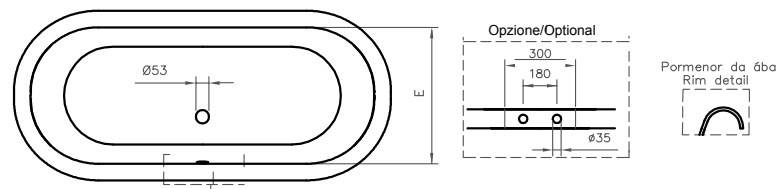
INFORMAZIONI TECNICHE - TECHNICAL INFORMATION



DIMENSIONI - DIMENSIONS (mm)

1780	1780	800	543	1640	660	585	450	465	-	290	-	-	-	-	-	-	-	-	1700
	A	B	C	D	E	F	G	H	I	J	L	M	N	O	P	Q	R		

KG	LT
PESO/WEIGHT	VOL.
182	240



Charme



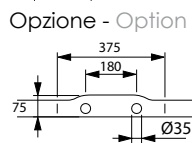
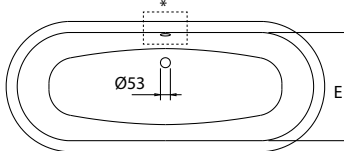
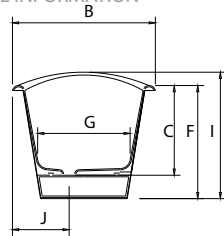
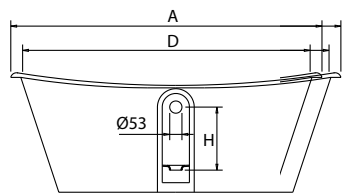
Tecnico

Valvola di scarico disponibile da 63 mm.

Overflow hole available with 63mm

Misure approssimative - Approximate measurements

INFORMAZIONI TECNICHE - TECHNICAL INFORMATION



Opzione - Option

DIMENSIONI - DIMENSIONS (mm)

1700	1700	680	492	1620	585	635	465	390	695	250	-	-	-	-	-	-	-	-	-	1700
	A	B	C	D	E	F	G	H	I	J	L	M	N	O	P	Q	R			

KG	1700
LT	215
PESO/WEIGHT	198
VOL.	215

Chic



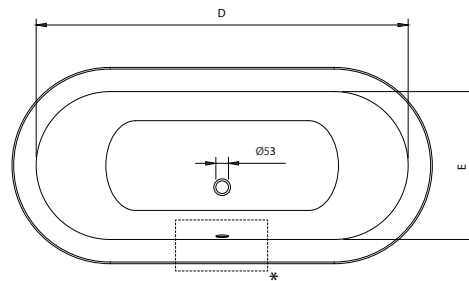
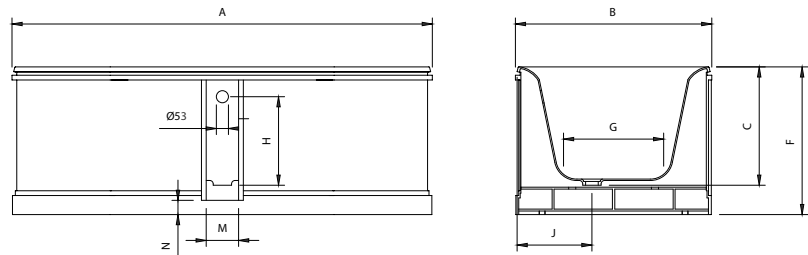
Tecnico

INFORMAZIONI TECNICHE - TECHNICAL INFORMATION

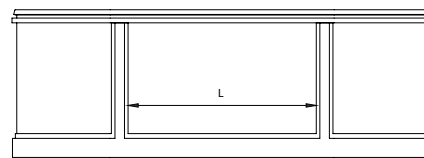
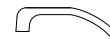
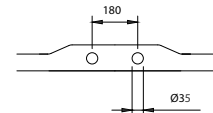
Valvola di scarico disponibile da 63 mm.

Overflow hole available with 63mm

Misure approssimative - Approximate measurements



Opzione - Option






DIMENSIONI - DIMENSIONS (mm)

1775 x 790	1775	790	500	1485	580	610	470	385	-	295	790	143	60	-	-	-	-
	A	B	C	D	E	F	G	H	I	J	L	M	N	O	P	Q	R

1775

KG	LT
PESO/WEIGHT 242	VOL. 175

-  Vasca interna in ghisa ed struttura esterna in metallo che si puo' dipingere in ogni colore.
-  Baignoire en fonte avec structure externe en métal qui peut être peinte de n'importe quelle couleur.
-  Cast iron bath with external metal frame that can be painted in any color.

Osate il colore...

Osez la couleur..Dare to color !!!



🇮🇹 Qualsiasi colore RAL e NCS è possibile su ogni vasca ... sta a voi decidere!

🇫🇷 Couleurs et nuances RAL et NCS tout est possible sur chacune des baignoires...à vous de choisir !

🇬🇧 Colors and shades RAL and NCS everything is possible on every bathtub...it is up to you to choose!



Piedini pieds feet

Piedini in dettaglio



Piede Lavande



Piede Thym



Piede Vintage



Piede Romarin



Piede Anis



Piede Jasmine



Piede Lion



Piede Fleur

Finitura piedi • Finitions • Finishes



Cromo • Chromé • Chrome



Bianco • Blanc • White



Oro • Or • Gold

RAL 9002	RAL 9003	RAL 9004	RAL 9005
RAL 9006	RAL 9007	RAL 9008	RAL 9009
RAL 9010	RAL 9011	RAL 9012	RAL 9013
RAL 9014	RAL 9015	RAL 9016	RAL 9017
RAL 9018	RAL 9019	RAL 9020	RAL 9021
RAL 9022	RAL 9023	RAL 9024	RAL 9025
RAL 9026	RAL 9027	RAL 9028	RAL 9029
RAL 9030	RAL 9031	RAL 9032	RAL 9033
RAL 9034	RAL 9035	RAL 9036	RAL 9037
RAL 9038	RAL 9039	RAL 9040	RAL 9041
RAL 9042	RAL 9043	RAL 9044	RAL 9045
RAL 9046	RAL 9047	RAL 9048	RAL 9049
RAL 9050	RAL 9051	RAL 9052	RAL 9053
RAL 9054	RAL 9055	RAL 9056	RAL 9057
RAL 9058	RAL 9059	RAL 9060	RAL 9061
RAL 9062	RAL 9063	RAL 9064	RAL 9065
RAL 9067	RAL 9068	RAL 9069	RAL 9070
RAL 9072	RAL 9073	RAL 9074	RAL 9075

**Colore RAL • Couleur RAL
Colour RAL**

Tutti i Piedi sono in ghisa
Tous les Pieds sont en fonte
All the feet are in cast iron



■ **CS01CR**
Colonna scarico vasca esterna con catenella cromo
Vidage avec chainette
Waste with chain



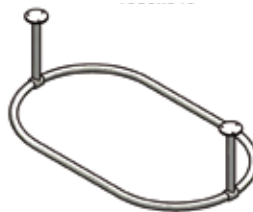
■ **CS02CR**
Colonna scarico vasca esterna automatica cromo
Vidage automatique
Automatic waste



■ **SIF01CR**
Sifone scarico vasca cromo
Siphon
Syphon



■ **PS01CR**
Porta sapone da appoggio vasca cromo cm.50/75
Barre porte savon
Bath rack



■ **PT80CR**
Tubolare tenda da soffitto cm.80 cromo
Porte rideau - Shower rail


■ **PT110CR**
Tubolare tenda da soffitto cm.110 cromo
Porte rideau - Shower rail


■ **PT156CR**
Tubolare tenda da soffitto cm.156 cromo
Porte rideau - Shower rail


Misure disponibili:
cm.80x640
cm.110x640
cm.156x640



Specifiche tecniche • Spécifications techniques • Technical specifications

 Tutte le nostre Vasche sono in ghisa piena, con interno smaltato bianco al titanio. Le nostre Vasche in ghisa rispettano gli standard qualitativi usando soltanto smalto classe AA, ASME A112-19.1-2008, CSA B45.2-08, EN-BS 232:2003, EN-BS 14516:2006 a norma CEE.
Finitura esterna vasche: Ghisa grezza, Ghisa con base primer, Bianco, Colore RAL o NCS sia opaco che lucido, Colori metallizzati.
Finitura piedi: Ghisa grezza, Ghisa con base primer, Bianco, Colore RAL o NCS sia opaco che lucido, Colori metallizzati, Cromo, Nickel spazzolato, Ottone lucido.

 Toutes nos baignoires sont en fonte pleine avec intérieur émaillé blanc au titane. Nos baignoires respectent tous les standards de qualité requis des classes AA, ASME A112-19.1-2008, CSA B45.2-08, EN-BS 232:2003, EN-BS 14516:2006 a norme CEE
Finitions extérieures des baignoires: Fonte brute, fonte avec base, fonte avec couleur blanche ou toutes couleurs à base RAL ou NCS (qu'elles soient mates, brillantes ou métallisées)
Finition des pieds: Fonte brute, fonte avec base, fonte avec couleur blanche ou toutes couleurs à base RAL ou NCS (qu'elles soient mates, brillantes ou métallisées). Chrome, nickel ou laiton.

 All our bathtubs are full cast iron with titanium white enameled interiors. Our bathtubs meet all quality standards required classes AA, ASME A112-19.1-2008, CSA B45.2-08, BS-EN 232:2003, BS EN 14516:2006, standard EEC
Exterior finishes of the bathtubs: Raw cast iron, base cast iron, cast iron with white or any color based RAL or NCS (both matt, shiny or metalized)
Feet finishes: Raw cast iron, base cast iron, cast with white or any color based RAL or NCS (both matt, shiny or metalized). Chromium, nickel or brass.

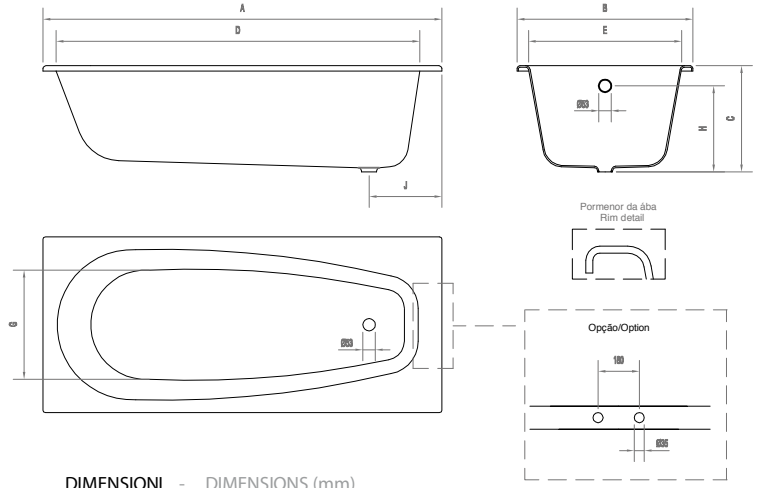
Vasche ghisa ad incasso

 Baignoires en fonte à encastrer
 Cast iron bathtubs recessed

Vasca **FIESTA**



cm.170x75



DIMENSIONI - DIMENSIONS (mm)

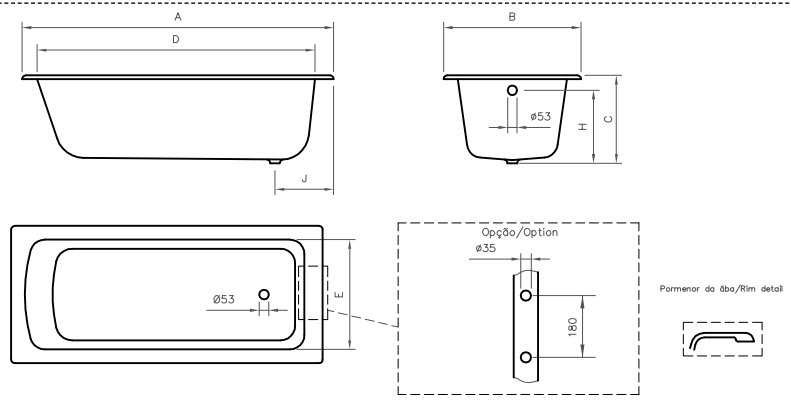
1700	1700	750	453	1540	630	-	400	373	-	312	-	-	-	-	-	-	-	-	-
	A	B	C	D	E	F	G	H	I	J	L	M	N	O	P	Q	R		

1700	
KG	LT
PESO/WEIGHT	VOL.
122	170

Vasca **CLASSE**



cm.170x75
cm.180x81

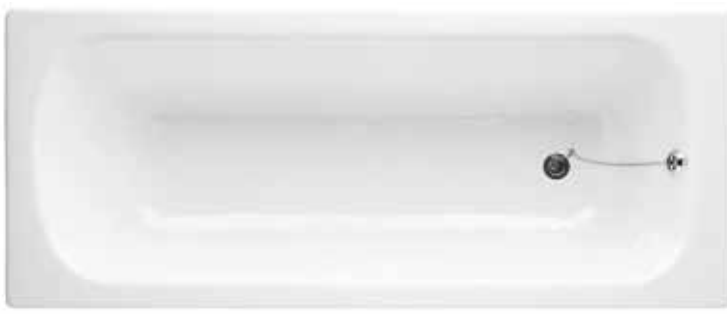


DIMENSIONI - DIMENSIONS (mm)

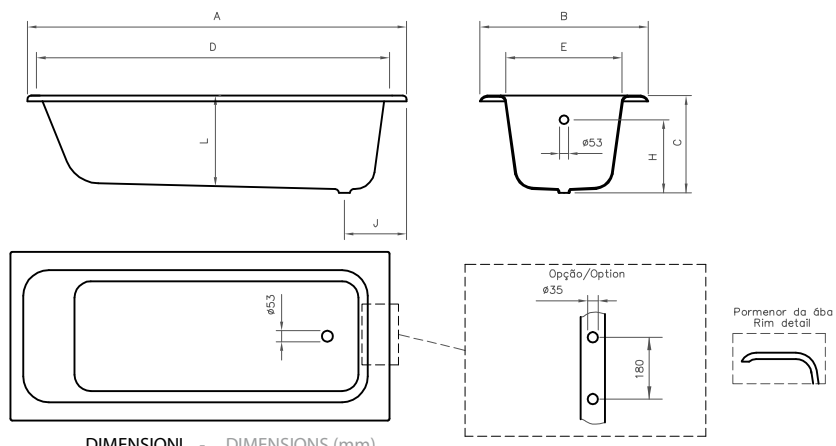
1700 1800	1700	750	470	1530	600	-	-	393	-	325	-	-	-	-	-	-	-	-	-
	1800	810	485	1630	620	-	-	400	-	325	-	-	-	-	-	-	-	-	-
A	B	C	D	E	F	G	H	I	J	L	M	N	O	P	Q	R			

1700		1700	
KG	LT	KG	LT
PESO/WEIGHT	VOL.	PESO/WEIGHT	VOL.
119	220	148	250

Vasca **BAY**



cm.180x80



DIMENSIONI - DIMENSIONS (mm)

1800	1800	800	525	1640	630	-	-	456	-	300	490	-	-	-	-	-	-	-	-
	A	B	C	D	E	F	G	H	I	J	L	M	N	O	P	Q	R		

1700	
KG	LT
PESO/WEIGHT	VOL.
152	255

Rubinetti

Robinetts
Taps

Blen
PROVENCE

CROMO
CHROMÉ
CHROME



Manopole Poignées Tap handles



FLEUR



CROIX



PORCELAINE



ANIS



OLIVE



ETOILE

Tutti i modelli di rubinetti anche se non fotografati in questo catalogo si possono avere con le manopole FLEUR, CROIX, PORCELAINE, ANIS, OLIVE, ETOILE. Le leve ANIS si possono avere qualsiasi finitura metallica (vedi sopra), in ceramica bianca, in ceramica nera, cristallo, legno, marmo.

Tous les robinets, même s'ils n'apparaissent pas sur les photos de ce catalogue, peuvent avoir les poignées FLEUR, CROIX, PORCELAINE, ANIS, OLIVE ou ETOILE. La poignée ANIS peut être avec toutes les finitions métalliques mais aussi en céramique blanche, noire ou, cristal, bois, marbre.

All valves, even if they do not appear in pictures on this catalogue, may have handles FLEUR, CROIX, PORCELAINE, ANIS, OLIVE or ETOILE. The ANIS handle can be with all metal finishes but also with white ceramic, black ceramic, crystal, wood, marble.

PASTIGLIE - PASTILLES POUR POIGNÉES - LOZENGES FOR HANDLES



COPPIA PASTIGLIE 1



COPPIA PASTIGLIE 2



COPPIA PASTIGLIE 3



COPPIA PASTIGLIE 4

Gli ordini vengono evasi automaticamente con pastiglia 1, gli altri tipi sono da specificare al momento dell'ordine. Les commandes sont livrées par défaut avec les pastilles n°1. Les autres pastilles sont disponibles sur demande. Orders are delivered with Lozenges n°1 by default. All other lozenges are available upon request.

PILETTA CERAMICA - BONDE DE VIDAGE EN CÉRAMIQUE - DRAIN ASSEMBLY IN CERAMIC



PILETTA CERAMICA

Su richiesta si può avere la piletta in ceramica bianca o nera

Sur demande, il est possible d'avoir la bonde de vidage en céramique (blanche ou noire)

On request you can have the drain assembly in ceramic (white or black)

Manopole Poignées Tap handles



CERAMICA BIANCA - CÉRAMIQUE
BLANC - WHITE CERAMIC



CERAMICA NERA - CÉRAMIQUE NOIRE
BLACK CERAMIC



CRISTALLO - CRISTAL - CRYSTAL



ANTICATA
CRAQUELÉ ANCIEN
OLD CRACKED



LEGNO ULIVO NATURALE
BOIS D'OLIVIER NATUREL
NATURAL OLIVE WOOD



LEGNO ULIVO PROTETTO
BOIS D'OLIVIER VERNI
VERNISHED OLIVE WOOD



LEGNO RADICA
BOIS RONCE - BURL WOOD



METALLO
MÉTAL - METAL



MARMO CARRARA BIANCO
MARBRE BLANC DE CARRARA
WHITE CARRARA MARBLE



NICKEL NERO
NICKEL NOIR
BLACK NICKEL

Rubinetti per lavabo

 Robinets pour lavabo

 Washbasin taps



■ **RLA101CR** • Batteria lavabo 3 fori collo alto ANIS c/scarico cromo
Robinets 3 trous lavabo ANIS avec vidage chromé
3 holes basin set ANIS with waste chrome



■ **RLC1042CR** • Monoforo lavabo CROIX c/scarico cromo
Monotrou lavabo CROIX avec vidage chromé
1 hole basin set CROIX with waste chrome



■ **RLC102CR** • Batteria lavabo 3 fori collo basso CROIX c/scarico cromo
Robinet bas lavabo 3 trous CROIX avec vidage chromé
3 holes basin set CROIX with waste chrome



■ **RLF104CR** • Monoforo lavabo FLEUR c/scarico cromo
Monotrou lavabo FLEUR avec vidage chromé
1 hole basin set FLEUR with waste chrome

NB. Tutti i modelli dei rubinetti sono disponibili con qualsiasi manopola vedi pag. 37 (vi preghiamo precisare sugli ordini modello manopola scelta insieme al codice rubinetto).

NB. Tous les modèles de robinets sont disponibles avec n'importe laquelle de nos poignées (voir page 37). Nous vous invitons, lors de votre commande, à nous préciser outre le code du robinet, le modèle de poignée souhaité.

NB. All the taps are available with any of our top handles (see page 37). Please, when ordering, make sure to precise the model of the handle you want in addition to the code of the tap.



■ **RLO103CR** • Batteria lavabo 3 fori collo alto OLIVE c/scarico cromo
Robinet haut lavabo 3 trous OLIVE avec vidage chromé
3 holes basin set OLIVE with waste chrome



■ **RLC1043CR** • Monoforo lavabo CROIX c/scarico cromo
Monotrou lavabo CROIX avec vidage chromé
1 hole basin set CROIX with waste chrome



■ **RLC1011MCR** • Rubinetto murale 3 fori CROIX cromo
Robinet mural 3 trous CROIX chromé
Wall mounted tap 3 holes CROIX Chrome




■ **RLA1044CR** • Miscelatore 1 foro ANIS con scarico cromo
Robinet mitigeur 1 trou ANIS avec vidage chromé
Mixer 1 hole ANIS wist waste chrome

NB. Tutti i modelli dei rubinetti sono disponibili con qualsiasi manopola vedi pag. 37 (vi preghiamo precisare sugli ordini modello manopola scelta insieme al codice rubinetto).

NB. Tous les modèles de robinets sont disponibles avec n'importe laquelle de nos poignées (voir page 37). Nous vous invitons, lors de votre commande, à nous préciser outre le code du robinet, le modèle de poignée souhaité.

NB. All the taps are available with any of our top handles (see page 37). Please, when ordering, make sure to precise the model of the handle you want in addition to the code of the tap.

Rubinetti per lavabo

 Robinets pour lavabo

 Washbasin taps



■ **RLC1013PCR** • Rubinetto ponte piccolo 2 fori CROIX c/scarico cromo interasse cm.20
Robinet pont bas lavabo 2 trous CROIX avec vidage chromé interaxe cm.20
Low bridge tap 2 holes basin set CROIX with waste chrome cm.20



■ **RLP1014PCR** • Rubinetto ponte 3 fori PORCELAINE c/scarico cromo
Robinet pont haut lavabo 3 trous PORCELAINE avec vidage chromé
High bridge tap 3 holes basin set PORCELAIN with waste chrome



■ **RLF100CR** • Rubinetto singolo FLEUR cromo
Robinet bas simple FLEUR chromé
FLEUR low single tap chrome



■ **RLF1031CR** • Batteria lavabo 3 fori collo basso FLEUR c/scarico cromo
Robinet bas lavabo 3 trous FLEUR avec vidage chromé
3 holes basin set FLEUR with waste chrome

NB. Tutti i modelli dei rubinetti sono disponibili con qualsiasi manopola vedi pag. 37 (vi preghiamo precisare sugli ordini modello manopola scelta insieme al codice rubinetto).

NB. Tous les modèles de robinets sont disponibles avec n'importe laquelle de nos poignées (voir page 37). Nous vous invitons, lors de votre commande, à nous préciser outre le code du robinet, le modèle de poignée souhaité.

NB. All the taps are available with any of our top handles (see page 37). Please, when ordering, make sure to precise the model of the



ORO
OR
GOLD

Rubinetti per bidet

 Robinets pour bidet

 Bidet taps



■ **RBO107CR** • Batteria bidet 3 fori collo basso OLIVE c/scarico cromo
Robinet bas bidet 3 trous OLIVE avec vidage chromé
3 holes bidet set OLIVE with waste chrome



■ **RBC108CR** • Batteria bidet 3 fori collo alto CROIX c/scarico cromo
Robinet haut bidet 3 trous CROIX avec vidage chromé
3 holes bidet set CROIX with waste chrome



■ **RBA1074CR** • Miscelatore 1 foro ANIS c/scarico cromo
Robinet mitigeur 1 trou ANIS avec vidage chromé
Mixer 1 hole ANIS with waste chrome



■ **RBF105CR** • Monoforo bidet FLEUR c/scarico cromo
Monotrou bidet FLEUR avec vidage chromé
1 hole bidet set FLEUR with waste chrome



■ **RBF1081CR** • Batteria bidet 3 fori collo basso FLEUR c/scarico cromo
Robinet bidet 3 trous col bas FLEUR avec vidage chromé
Low bidet tap 3 holes set FLEUR with waste chrome



■ **RBF1053CR** • Monoforo bidet FLEUR c/scarico cromo
Monotrou bidet FLEUR avec vidage chromé
1 hole bidet set FLEUR with waste chrome



■ **RBF106CR** • Batteria bidet Fleur 3 fori senza erogazione
Robinets bidet 3 trous sans bec verseur
Bidet tap 3 holes without spout

NB. Tutti i modelli dei rubinetti sono disponibili con qualsiasi manopola vedi pag. 37 (vi preghiamo precisare sugli ordini modello manopola scelta insieme al codice rubinetto).

NB. Tous les modèles de robinets sont disponibles avec n'importe laquelle de nos poignées (voir page 37). Nous vous invitons, lors de votre commande, à nous préciser outre le code du robinet, le modèle de poignée souhaité.

NB. All the taps are available with any of our top handles (see page 37). Please, when ordering, make sure to precise the model of the handle you want in addition to the code of the tap.



■ **RVC111CR** • Gruppo vasca da pavimento con colonne CROIX cromo
Robinetterie baignoire avec jambes CROIX chromé
Free standing bathtub mixer CROIX chrome



■ **RVC112CR** • Gruppo vasca con colonne e porta salviette CROIX cromo
Robinetterie baignoire avec jambes et porte serviette CROIX chromé
Free standing bathtub mixer with towel rail CROIX chrome



■ **RVF110CR** • Gruppo vasca da muro FLEUR cromo
Robinetterie baignoire murale FLEUR chromé
Wall mounted bathtub mixer FLEUR chrome



■ **CS01CR** • Scarico vasca con catenella cromo
Vidage baignoire avec chaînette chromé
Bathtub waste with chain chrome

NB. Tutti i modelli dei rubinetti sono disponibili con qualsiasi manopola vedi pag. 37 (vi preghiamo precisare sugli ordini modello manopola scelta insieme al codice rubinetto).

NB. Tous les modèles de robinets sont disponibles avec n'importe laquelle de nos poignées (voir page 37). Nous vous invitons, lors de votre commande, à nous préciser outre le code du robinet, le modèle de poignée souhaité.

NB. All the taps are available with any of our top handles (see page 37). Please, when ordering, make sure to precise the model of the handle you want in addition to the code of the tap.

Rubinetti per vasca

 Robinets pour baignoire

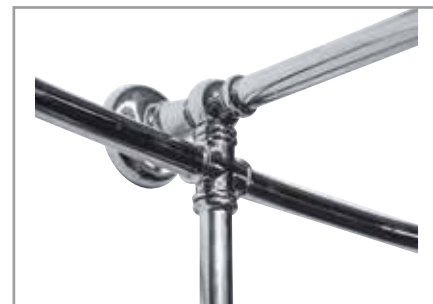
 Bathtub taps



■ **RVC119CR** • Gruppo vasca est.3 vie/asta/doc-
cetta/braccio/soffione (Ø.15/20/30 cm) FLEUR cromo
con porta tenda cm. 80x100

Robinet baignoire mural + inverseur + barre + cable
et douchette + pommeau (15/20/30cm) + porte
rideau cm. 80x100

Recessed wall mounted bath tap with diverter + rod +
handset + shower head (15/20/30cm)+ shower rail
cm.80x100



NB. Tutti i modelli dei rubinetti sono disponibili con qualsiasi manopola vedi pag. 37 (vi preghiamo precisare sugli ordini modello manopola scelta insieme al codice rubinetto).

NB. Tous les modèles de robinets sont disponibles avec n'importe laquelle de nos poignées (voir page 37). Nous vous invitons, lors de votre commande, à nous préciser outre le code du robinet, le modèle de poignée souhaité.

NB. All the taps are available with any of our top handles (see page 37). Please, when ordering, make sure to precise the model of the handle you want in addition to the code of the tap.




- **RVF113CR** • Gruppo vasca est.3
vie/asta/doccetta/braccio/soffione
(Ø.15/20/30 cm) FLEUR cromo
Robinet baignoire mural + inverseur +
barre + cable et douchette+
pommeau (15/20/30cm)
Recessed wall mounted bath tap with
diverter + rod + handset + shower head
(15/20/30cm)

NB. Tutti i modelli dei rubinetti sono disponibili con qualsiasi manopola vedi pag. 37 (vi preghiamo precisare sugli ordini modello manopola scelta insieme al codice rubinetto).

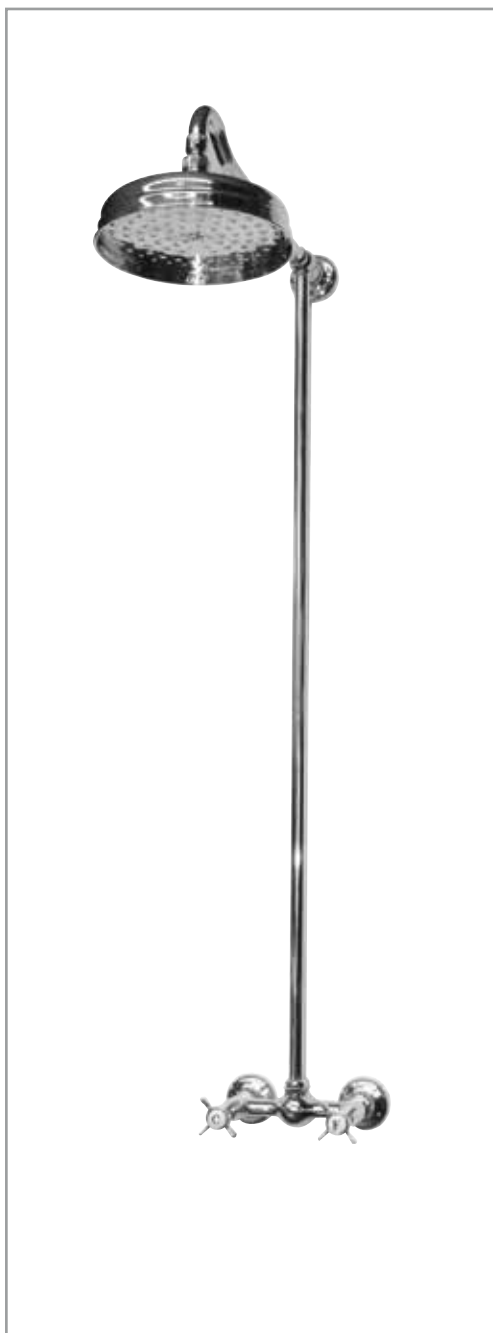
NB. Tous les modèles de robinets sont disponibles avec n'importe laquelle de nos poignées (voir page 37). Nous vous invitons, lors de votre commande, à nous préciser outre le code du robinet, le modèle de poignée souhaité.

NB. All the taps are available with any of our top handles (see page 37). Please, when ordering, make sure to precise the model of the handle you want in addition to the code of the tap.

Rubinetti per doccia

 Robinets pour douche

 Shower taps



■ **RDF114CR** • Gruppo doccia esterno FLEUR con asta e soffione (Ø.15/20/30 cm) FLEUR cromo
Robinet douche mural FLEUR avec barre et pommeau (15/20/30cm)
Recessed wall mounted shower taps FLEUR with rod and shower head (15/20/30cm)



■ **RDF118CR** • Gruppo doccia est.duplex/asta/doccetta/braccio/soffione (Ø.15/20/30 cm) FLEUR cromo
Robinet douche mural FLEUR avec inverseur + barre + cable & douchette +pommeau (15/20/30cm)
Recessed wall mounte shower taps FLEUR with diverter + rod + handset + shower head (15/20/30cm)



■ **RDA118PCR** • Gruppo doccia est. ponte duplex/asta/doccetta/braccio/soffione (Ø.15/20/30 cm) ANIS cromo
Robinet douche pont mural Anis avec inverseur + barre + cable et douchette + pommeau (15/20/30cm)
Recessed wall mounted shower bridge tap with diverter + rod + handset + shower head (15/20/30cm)

NB. Tutti i modelli dei rubinetti sono disponibili con qualsiasi manopola vedi pag. 37 (vi preghiamo precisare sugli ordini modello manopola scelta insieme al codice rubinetto).

NB. Tous les modèles de robinets sont disponibles avec n'importe laquelle de nos poignées (voir page 37). Nous vous invitons, lors de votre commande, à nous préciser outre le code du robinet, le modèle de poignée souhaité.

NB. All the taps are available with any of our top handles (see page 37). Please, when ordering, make sure to precise the model of the



■ **RD120CR** • Soffione doccia 20 cm con braccio 20 cm cromo (Ø.15/20/30cm)
Pommeau de douche 20 cm avec bras 20 cm chromé (Ø.15/20/30cm)
Shower head 20cm with handset 20 cm chrome (Ø.15/20/30cm)



■ **RD120SCR** • Soffione doccia 20 cm con braccio a soffitto (Ø.15/20/30cm)
Pommeau de douche relié au plafond (15/20/30cm)
Ceiling showerhead (15/20/30cm)



■ **RDA117CR** • Miscelatore doccia incasso con deviatore Anis cromo
mitigeur douche chromé encastré avec inverseur – poignée Anis
Shower mixer recessed with diverter – ANIS handle chromed



■ **RDC116CR** • Miscelatore termostatico incasso CROIX cromo
Mitigeur thermostatique encastré CROIX chromé
Thermostatic mixer for shower CROIX chrome



■ **RDC115CR** • Termostatico doccia est. duplex/asta/doccetta/braccio/soffione (Ø.15/20/30 cm) CROIX cromo
Mitigeur thermostatique douche chromé Croix avec inverseur + barre + câble et douchette + pommeau (15/20/30cm)
Chrome wall mounted thermostatic shower mixer with diverter + rod + handset + shower head (15/20/30cm)

NB. Tutti i modelli dei rubinetti sono disponibili con qualsiasi manopola vedi pag. 37 (vi preghiamo precisare sugli ordini modello manopola scelta insieme al codice rubinetto).

NB. Tous les modèles de robinets sont disponibles avec n'importe laquelle de nos poignées (voir page 37). Nous vous invitons, lors de votre commande, à nous préciser outre le code du robinet, le modèle de poignée souhaité.

NB. All the taps are available with any of our top handles (see page 37). Please, when ordering, make sure to precise the model of the handle you want in addition to the code of the tap.

Accessori bagno

 Accessoires de bain

 Bath accessories



■ **AB201CR** • Porta sapone ceramica/cromo da muro
Porte savon mural en ceramique/chromé
Wall mounted soap ceramic dish/chrome



■ **AB203CR** • Appendiabito cromo
Porte peignoire chromé
Wall mounted hook chrome



■ **AB202CR** • Porta spazzolino ceramica/cromo da muro
Porte brosse à dents mural en ceramique/chromé
Wall mounted ceramic tumbler chrome



■ **AB219CR** • Porta sapone/spazzolino da appoggio in ceramica/cromo
Porte savon/brosse à dent en céramique avec support chromé
Wall mounted soap dish/tumbler in ceramic with chrome support



■ **AB205CR** • Porta salviette barra cromo
40 cm (disponibile anche in 60 cm)
Porte serviette chromé 40 cm (disponible aussi
en 60 cm)
Wall mounted towel rail cm 40 chrome (available
also in cm 60)



■ **AB207CR** • Porta rotolo cromo
Porte papier toilette chromé
Toilet roll holder chrome



■ **AB204CR** • Porta salviette anello cromo
Porte serviette anneau chromé
Wall mounted towel ring chrome



■ **AB208CR** • Porta scopino da terra cromo e
interno ceramica
Porte balais chromé avec interieur en ceramique
Freestanding toilet brush chrome and ceramic

Accessori bagno

 Accessoires de bain

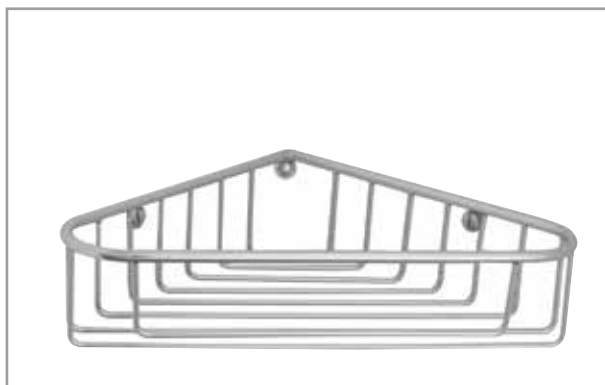
 Bath accessories



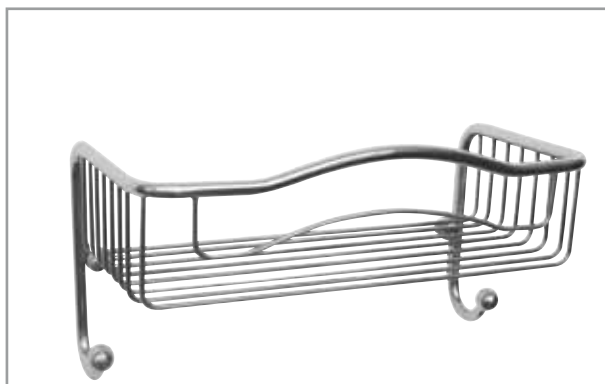
■ **AB213CR** • Piantana p.salviette barra
+ p.rotolo + p.scopino in ceramica
Piédestal avec barre porte-serviettes +
porte papier toilette + porte balai en céramique
Pedestal with towel rail + toilet roll holder +
toilet brush in ceramic



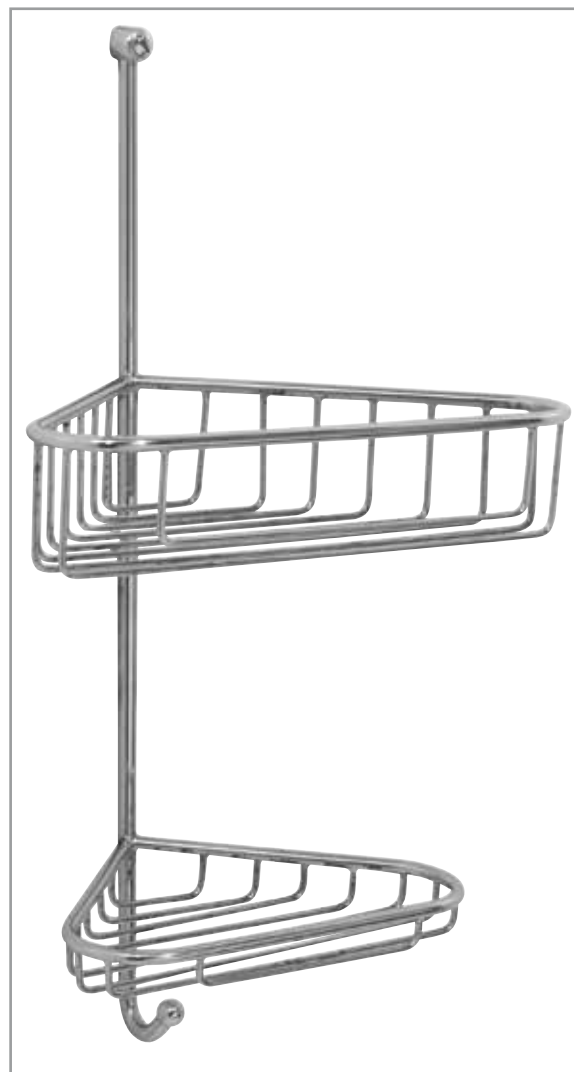
■ **AB214CR** • Piantana p.salviette anello
+ p.rotolo + p.scopino in ceramica
Piédestal avec anneau porte-serviettes +
porte papier toilette + porte balai en céramique
Pedestal with towel ring + toilet roll holder +
toilet brush in ceramic



■ **AB215CR** • Griglia doccia angolare cromo
Grille de douche angulaire chromée
Angular shower grid in chrome



■ **AB216CR** • Griglia doccia dritta con ganci cromo
Grille de douche droite chromée avec crochets
Straight shower grid in chrome with hooks



■ **AB217CR** • Griglia doccia angolare doppia cromo
Double grille de douche angulaire chromée
Double angular shower grid in chrome



■ **AB218CR** • Mensola vetro porta oggetti cromo cm. 64x13
Étagère en verre chromée cm. 64x13
Chrome glass shelf cm. 64x13

Specchi

 Miroir
 Mirrors



■ **AB209CR** • Specchio ovale piccolo basculante cromo cm.50x70
Miroir ovale basculant chromé cm.50x70
Small oval tilting mirror chrome cm.50x70



■ **AB209MCR** • Specchio ovale piccolo basculante con cornice in ottone cromato cm.50x70
Miroir ovale basculant avec cadre en laiton chromé 50x70cm
Oval tilting mirror with chromed brass frame 50x70cm



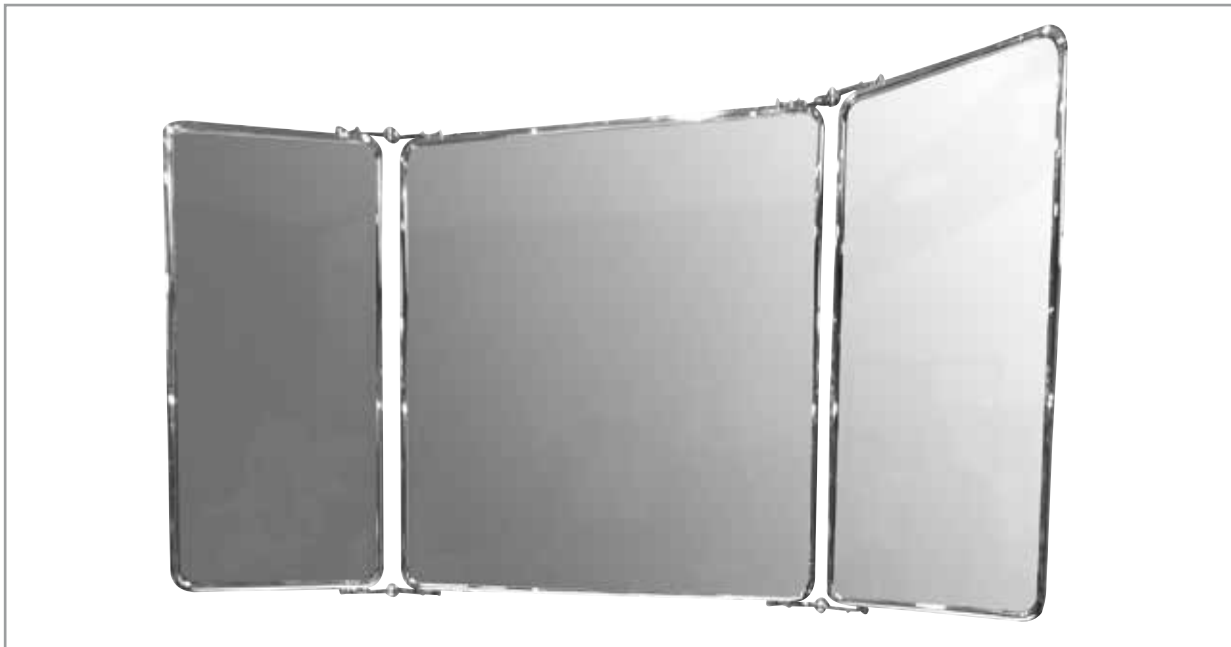
■ **AB210CR** • Specchio rettangolare basculante cromo cm.57x76
Miroir rectangulaire basculant chromé cm.57x76
Rectangular tilting mirror chrome cm.57x76



■ **AB210MCR** • Specchio rettangolare basculante con cornice in ottone cromato cm.57x76
Miroir rectangulaire basculant avec cadre en laiton chromé 57x76cm
Rectangular tilting mirror with chromed brass frame 57x76cm



■ **AB211CR** • Specchio ovale grande con led retroilluminazione cromo cm.120x70
Grand miroir ovale chromé rétro-éclairé LED 120x70cm
Big oval mirror chrome with LED backlit 120x70cm



■ **AB212CR** • Specchio trifacciale ripiegabile cm. totali 114x60
Miroir pliable 3 faces 114x60cm
3 faces foldable mirror 114x60cm

Appliques

 Appliques

 Bracket lamps



■ **ABA01CR** • Appliques
Appliques
Bracket lamps



■ **ABA02CR** • Appliques
Appliques
Bracket lamps



■ **ABA04CR** • Appliques
Appliques
Bracket lamps



■ **ABA03CR** • Appliques
Appliques
Bracket lamps

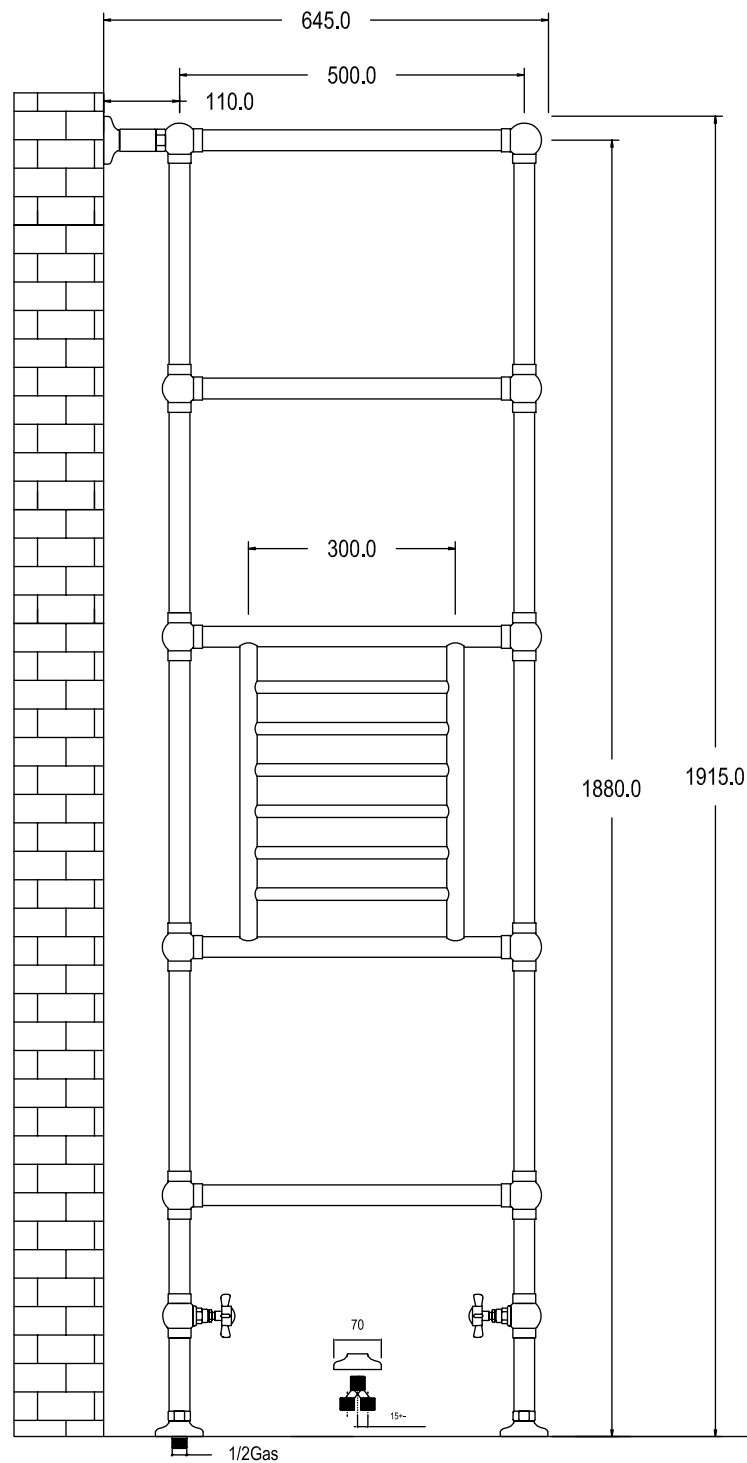
FINITURE TESSUTO APPLIQUE / FINITIONS TISSU APPLIQUES / FINISHES FABRIC APPLIQUES

BIANCO - BEIGE - BORDEAUX - NERO
BLANC - BEIGE - BORDEAUX - NOIR
WHITE - BEIGE - RED - BLACK

Chauffe serviettes 
Heated towel rail 

DISPONIBILE ANCHE IN VERSIONE ELETTRICA
AUSI DISPONIBILE EN VERSION ELECTRIQUE
ALSO AVAILABLE ELECTRIC

Scaldasalviette



■ **SSPV5DGCR** • Radiatore a pavimento 5 barre cromo cm.1915x645
DT60° Kcal/h 706.5 - Watt 819.5
Radiateur de sol 5 barres chromé cm.1915x645
DT60° Kcal/h 706.5 - Watt 819.5
Floor mounted radiator with 5 rails chrome cm.1915x645 DT60° Kcal/h 706.5 - Watt 819.5

Scaldasalviette

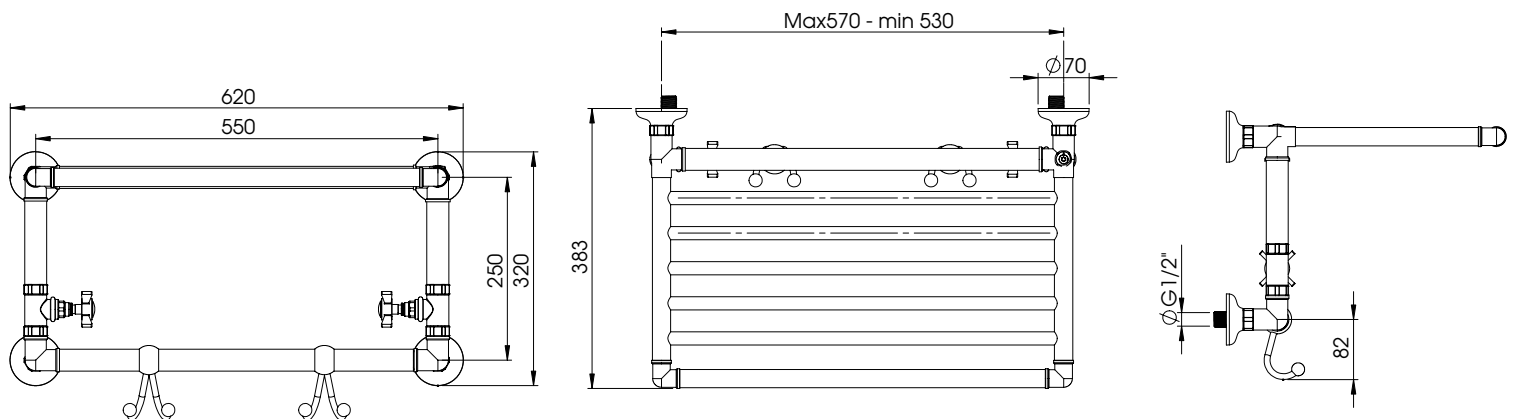
 Chauffe serviettes

 Heated towel rail

DISPONIBILE ANCHE IN VERSIONE ELETTRICA
AUSI DISPONIBILE EN VERSION ELECTRIQUE
ALSO AVAILABLE ELECTRIC



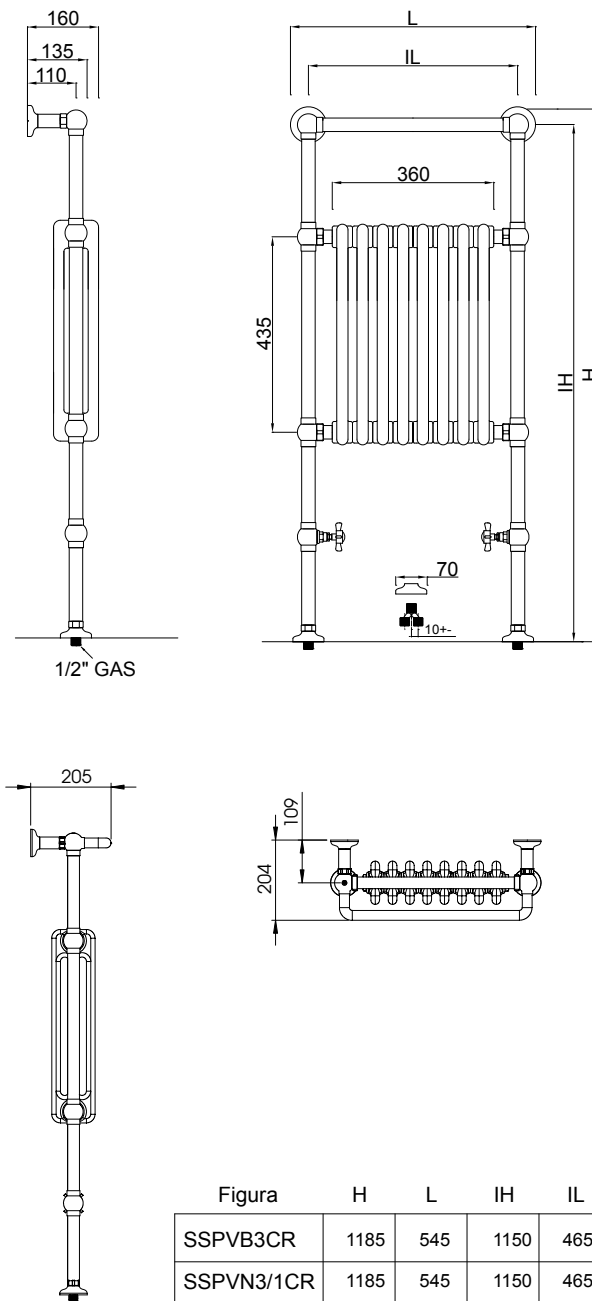
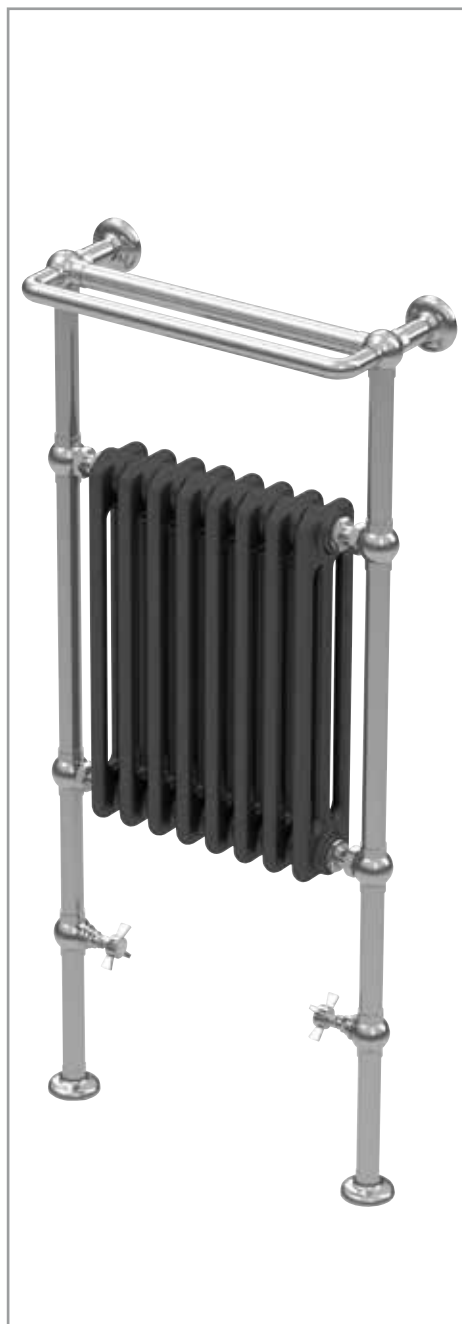
■ **SSCAP1CR** • Radiatore porta salviette cromo DT60° Kcal/h 293.8 - Watt 340
Radiator mural porte serviettes chrome DT60° Kcal/h 293.8 - Watt 340
Wall mounted towel holder radiator chrome DT60° Kcal/h 293.8 - Watt 340



Chauffe serviettes 
 Heated towel rail 

DISPONIBILE ANCHE IN VERSIONE ELETTRICA
 AUSSI DISPONIBILE EN VERSION ELECTRIQUE
 ALSO AVAILABLE ELECTRIC

Scaldasalviette



■ **SSPVB3CR** • Radiatore a pavimento con inserto in ghisa cm.1185x545
 DT60° Kcal/h 623,6 - Watt 723
 Radiateur de sol avec insert en fonte 1185x545cm
 DT60° Kcal/h 623,6 - Watt 723
 Floor mounted radiator with cast iron insert 1185x545cm
 DT60° Kcal/h 623,6 - Watt 723

■ **SSPVN3/1CR** • Radiatore a pavimento con inserto in ghisa e barra porta salviette cm.1185x545
 DT60° Kcal/h 653,6 - Watt 758
 Radiateur de sol avec insert en fonte et barre porte serviette 1185x545cm
 DT60° Kcal/h 653,6 - Watt 758
 Floor mounted radiator with cast iron insert and towel rail 1185x545cm
 DT60° Kcal/h 653,6 - Watt 758

Figura	H	L	IH	IL
SSPVB3CR	1185	545	1150	465
SSPVN3/1CR	1185	545	1150	465

Scaldasalviette

 **Chauffe serviettes**

 **Heated towel rail**

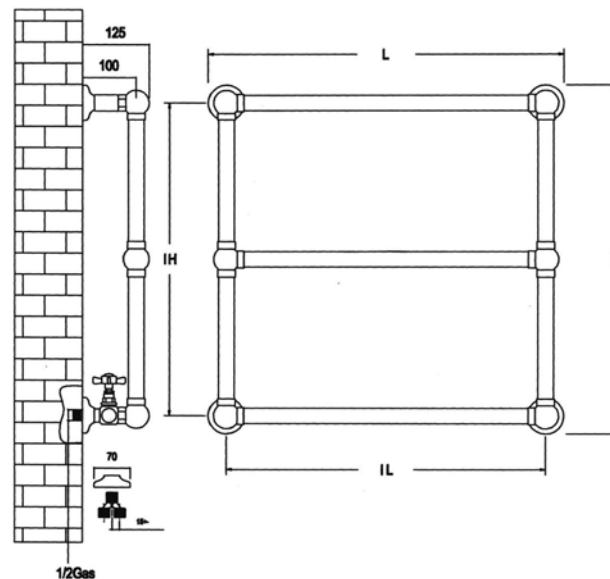
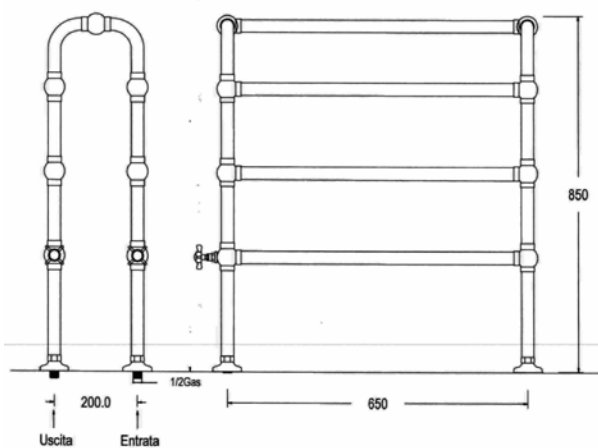
DISPONIBILE ANCHE IN VERSIONE ELETTRICA
 AUSSI DISPONIBILE EN VERSION ELECTRIQUE
 ALSO AVAILABLE ELECTRIC



■ **SSCA7CR** • Radiatore a cavalletto da pavimento a cromo DT60° Kcal/h 762-Watt 884
 Radiateur chevalet de sol chromé
 DT60° Kcal/h 762-Watt 884
 Floor mounted easel radiator chrome
 DT60° Kcal/h 762-Watt 884



■ **SSP3CR** • Radiatore a parete 3 barre cromo (diverse dimensioni disponibili)
 Radiateur mural 3 barres chromé (plusieurs dimensions disponibles)
 Wall mounted radiator with 3 rails chrome (several sizes available)

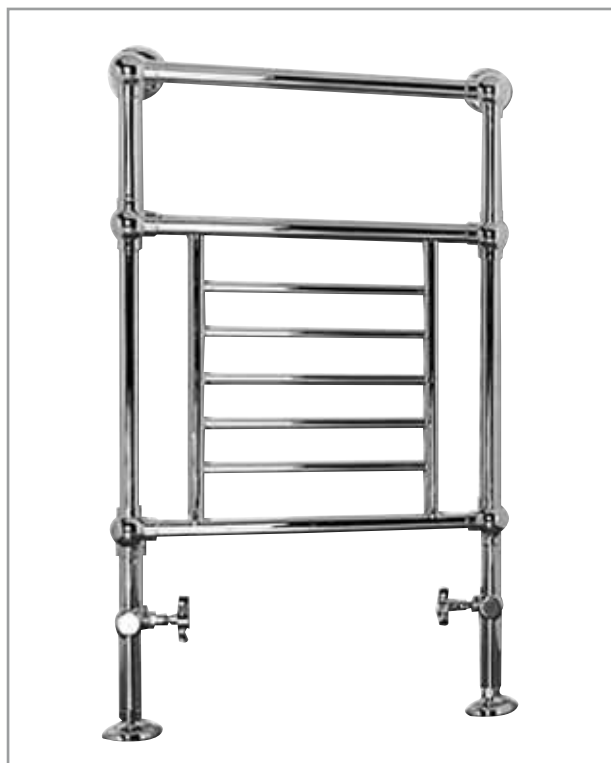


CODE	H	L	IH	IL	Kcal.	Watt
SSP 3/1	620	620	550	550	390	454
SSP 3/2	620	820	550	750	468	544
SSP 3/3	820	420	750	350	364	423
SSP 3/4	820	520	750	450	403	469

Chauffe serviettes 
 Heated towel rail 

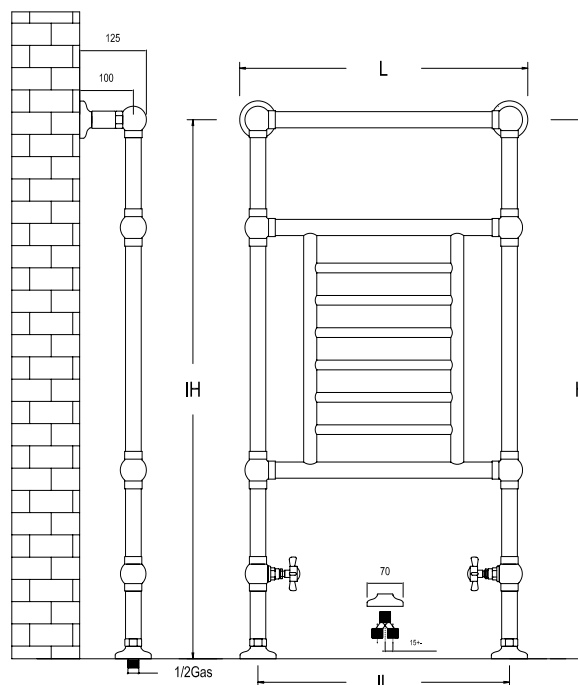
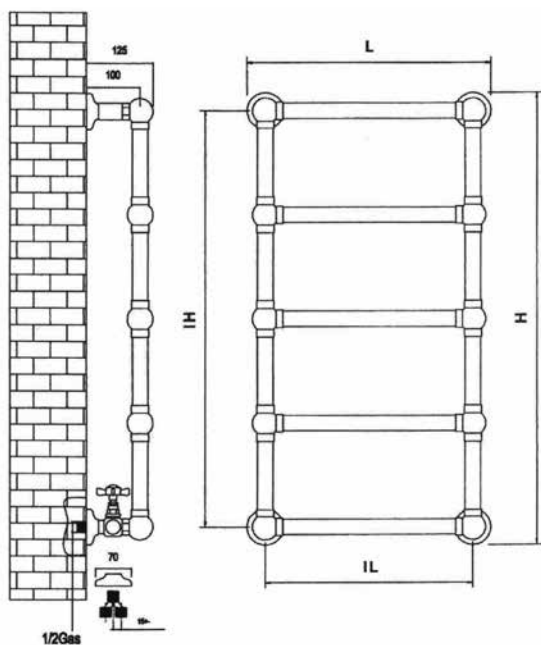
DISPONIBILE ANCHE IN VERSIONE ELETTRICA
 AUSSI DISPONIBILE EN VERSION ELECTRIQUE
 ALSO AVAILABLE ELECTRIC

Scaldasalviette



■ **SSP5CR** • Radiatore a parete 5 barre cromo (diverse dimensioni disponibili)
 Radiateur mural 5 barres chromé (plusieurs dimensions disponibles)
 Wall mounted radiator with 5 rails chrome (several sizes available)

■ **SSPV3CR** • Radiatore a pavimento 3 barre cromo (diverse dimensioni disponibili)
 Radiateur de sol 3 barres chromé (plusieurs dimensions disponibles)
 Floor mounted radiator with 3 rails chrome (several sizes available)



CODE	H	L	IH	IL	Kcal.	Watt
SSP 5/1	870	470	800	400	514	598
SSP 5/2	870	570	800	500	579	673
SSP 5/3	1070	470	1000	400	566	658
SSP 5/4	1070	570	1000	500	631	734

Code	H	L	IH	IL	Kcal.
SSPV 3/1	1185	570	1150	500	792
SSPV 3/2	1185	670	1150	600	844

Finiture metalli

 Finition des métaux

 Metal finishing

 Tutti i ns. prodotti in ottone come RUBINETTI, ACCESSORI, SCALDASALVIETTE si possono avere nelle seguenti finiture.

 Tous les produits en laiton comme les robinets, accessoires et chauffe-serviettes peuvent avoir les finitions suivantes.

 All our brass products such as taps, accessories and heated towel rails can be done in the following finishes.

FINITURE RUBINETTI / ACCESSORI / SCALDASALVIETTE
FINITIONS ROBINETS / ACCESSOIRES / CHAUFFE SERVIETTES
FINISHES - TAPS / ACCESSORIES / HEATED TOWEL RAILS

CR = CROMO - CHROME - CHROME

NK = NICKEL - NICKEL - NICKEL

NS = NICKEL SATINATO - NICKEL MAT - BRUSHED NICKEL

OR = ORO - OR - GOLD

BR = BRONZO - BRONZE - BRONZE

RM = RAME - CUIVRE - COPPER

NN = NICKEL NERO - NICKEL NOIR - BLACK NICKEL



BR = BRONZO - BRONZE - BRONZE



RM = RAME - CUIVRE - COPPER



NK = NICKEL - NICKEL - NICKEL



CR = CROMO - CHROME - CHROME



OR = ORO - OR - GOLD



NS = NICKEL SATINATO - NICKEL MAT - BRUSHED NICKEL



NN = NICKEL NERO - NICKEL NOIR - BLACK NICKEL

Radiateurs en fonte 
Cast iron radiators 


Radiatori in ghisa





■ Radiatore Ghisa decorato in varie dimensioni (vedi tabella)
Radiateur en fonte décoré de tailles diverses (voir tableau)
Cast iron decorated radiator in various sizes (see table)



■ Radiatore Ghisa liscio In varie dimensioni (vedi tabella)
Radiateur en fonte avec surface lisse de tailles diverses (voir tableau)
Cast iron with smooth surface radiator in various sizes (see table)

 La serie radiatori 900 è in ghisa. Ogni radiatore deve essere composto dai singoli elementi calcolando il numero di calorie desiderato. I piedini vengono posizionati sia laterali che intermedi se necessari. Il massimo di elementi per batteria è di 20. I radiatori sono certificati CE - EN442. Pressione max d'esercizio, 8 bar. Temperatura max d'esercizio 95°C. Trattamento esterno con verniciatura antiruggine. Il colore standard è ghisa naturale grigio. Su richiesta colore bianco o ral. Per batterie di lunghezza superiore a 14 elementi verrà aggiunto un piedino intermedio nel mezzo, pertanto si consiglia, in questo caso, di ordinare numero dispari di elementi in modo che l'elemento aggiuntivo con piedino cada al centro della batteria.

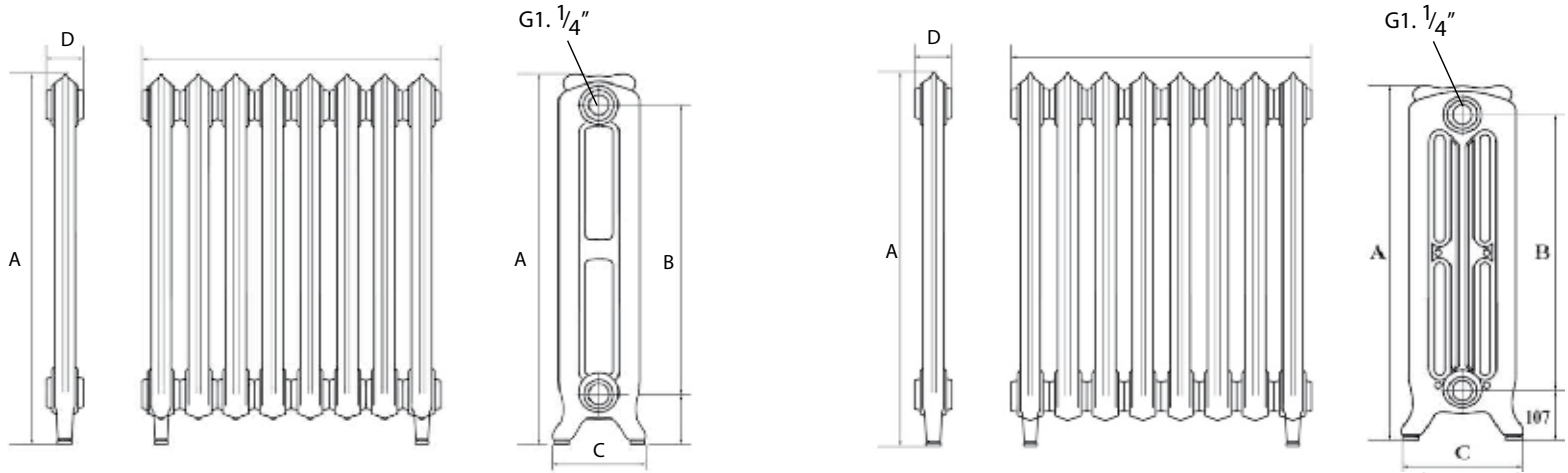
 La série de radiateurs 900 est en fonte. Chaque radiateur doit être composé d'éléments individuels pour calculer la chaleur désirée. Les pieds peuvent être positionnés tant latéralement qu'au niveau intermédiaire. On peut mettre un maximum de 20 éléments par batterie. Les radiateurs sont certifiés CE-EN442. Pression maximale de 8 bars et température maximale de 95°C. Traitement extérieur avec peinture anti-rouille. La couleur standard est le gris fonte naturelle. On peut sur demande le peindre aussi en blanc ou dans n'importe quelle couleur RAL. Pour les batteries excédant 14 éléments on ajoutera un pied intermédiaire au milieu. Il est conseillé dans ce cas de commander un nombre impair d'éléments de sorte que le pied soit au centre de la batterie.

 The series radiators 900 is made in cast iron. Each radiator must be composed of individual elements by calculating the number of calories needed. The feet are placed on both lateral and intermediate if necessary. The max items per battery is 20pc. The radiators are certificated CE - EN442. Maximum working pressure, 8 bar. Maximum working temperature 95 ° C. External treatment with anti-rust paint. The standard color is natural gray cast iron. On request white or RAL. For batteries of a length exceeding 14 elements will be added an intermediate leg in the middle, so it is advisable, in this case, to order odd number of elements so that the additional element with foot falls is in the center of the battery.

Radiatori in ghisa

 Radiateurs en fonte

 Cast iron radiators




900											
codice /code	Type		A mm	B mm	C mm	D mm	Kg	Lt	$\Delta T 40^{\circ}C$	$\Delta 50^{\circ}C$	$\Delta 60^{\circ}C$
2 colonne decorato / 2 columns embroidered / 2 colonnes décor											
RG900 2 660I	2/660	inter	595	500	203	76	10,5	2,30	78	104	132
RG900 2 660L	2/660	lat.	660	500	203	76	11,2	2,30	78	104	132
RG900 2 760I	2/760	inter	695	605	203	76	11,0	2,60	90	121	154
RG00 2 760L	2/760	lat.	760	605	203	76	12,2	2,60	90	121	154
RG900 2 950I	2/950	inter	885	795	203	76	13,4	3,30	112	151	193
RG900 2 950L	2/950	lat.	950	795	203	76	14,4	3,30	112	151	193
3 colonne liscio / 3 columns plain / 3 colonnes lisse											
RG900 3 760I	3/760	inter	690	582	250	78	11	2,3	102	138	177
RG900 3 760L	3/760	lat.	760	582	250	78	12,5	2,3	102	138	177
RG900 3 950I	3/950	inter	890	782	250	78	13,9	2,8	134	182	234
RG900 3 950L	3/950	lat.	950	782	250	78	15,4	2,8	134	182	234
3 colonne decorato / 3 columns embroidered / 3 colonnes décor											
RG900 3 760I	3/760	inter	690	582	250	78	11	2,3	102	138	177
RG900 3 760L	3/760	lat.	760	582	250	78	12,5	2,3	102	138	177
RG900 3 950I	3/950	inter	890	782	250	78	13,9	2,8	134	182	234
RG900 3 950L	3/950	lat.	950	782	250	78	15,4	2,8	134	182	234

Florence





■ RD1010 Radiatore Design FLORENCE


 IL RADIATORE "FLORENCE E' PRESENTATO IN FINITURA FOGLIA ORO, NELLA DIMENSIONE DI 2000x 600 MM E SVILUPPA UNA POTENZA DI 1020 W. E' DISPONIBILE ANCHE IN VERSIONE ELETTRICA.

 LE RADIATEUR "FLORENCE" A UNE FINITION EN FEUILLE OR, UNE DIMENSION DE 2000x600 MM ET IL DEVELOPPE UNE PUISSANCE DE 1020 W. IL EST AUSSI DISPONIBLE EN VERSION ELECTRIQUE

 THE RADIATOR «FLORENCE » HAS A FINISH GOLD LEAF, HAS A DIMENSION OF 2000x600MM AND GIVES AN OUTPUT OF 1020 W. IT IS ALSO AVAILABLE ELECTRIC.

 I Radiatori possono essere fatti solo nelle dimensioni indicate per ogni modello. Su richiesta possono essere, bianco Ral 9010, Altri colori, alluminio spazzolato o foglia oro. Su richiesta si puo' avere la retroilluminazione led.

 Les radiateurs ne peuvent être faits que dans les dimensions indiquées pour chaque modèle. Les couleurs disponibles sur demande sont : blanc RAL 9010 et toutes autres couleurs RAL, finition aluminium brossé ou feuille d'or. Rétro éclairage LED disponible sur demande.

 Radiators can only be done in the size specified for each model. The colors available on request are : white RAL 9010 and any other RAL color, satinated aluminum or gold leaf finish. Backlighting LED is also available on demand.

ACCESSORI IN CROMO LUCIDO DA INSERIRE SUL RADIATORE:

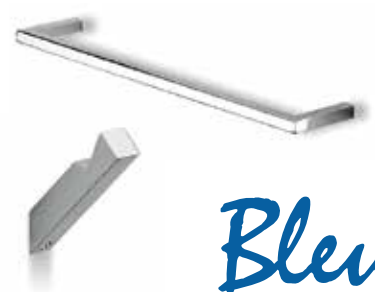
Art. AC60
Porta salviette da cm 60
Art. AC45
Portasalviette cm 45
Art. AC30
Portasalviette cm 30
Art. AC10
Appendiabito

ACCESSOIRES EN CHROME

Art. AC60
Porte serviette cm 60
Art. AC45
Porte serviette cm 45
Art. AC30
Porte serviette cm 30
Art. AC10
Porte Peignoire

ACCESSORIES CHROME


Art. AC60
Single towel rail cm 60
Art. AC45
Single towel rail cm 45
Art. AC30
Single towel rail cm 30
Art. AC10
Hook



Versailles





■ RD1020 Radiatore Design VERSAILLES


 IL RADIATORE "VERSAILLES" E' PRESENTATO IN FINITURA ALLUMINIO SATINATO, NELLA DIMENSIONE DI 2000X 600 MM E SVILUPPA UNA POTENZA DI 1020 W. E' DISPONIBILE ANCHE IN VERSIONE ELETTRICA.

 LE RADIATEUR "VERSAILLES" A UNE FINITION EN ALUMINIUM MAT, UNE DIMENSION DE 2000X600 MM ET IL DEVELOPPE UNE PUISSANCE DE 1020 W. IL EST AUSSI DISPONIBLE EN VERSION ELECTRIQUE

 THE RADIATOR «VERSAILLES» HAS A FINISH SATINED ALUMINIUM, HAS A DIMENSION OF 2000X600MM AND GIVES AN OUTPUT OF 1020 W. IT IS ALSO AVAILABLE ELECTRIC.

 I Radiatori possono essere fatti solo nelle dimensioni indicate per ogni modello. Su richiesta possono essere, bianco Ral 9010, Altri colori, alluminio spazzolato o foglia oro. Su richiesta si puo' avere la retroilluminazione led.

 Les radiateurs ne peuvent être faits que dans les dimensions indiquées pour chaque modèle. Les couleurs disponibles sur demande sont : blanc RAL 9010 et toutes autres couleurs RAL, finition aluminium brossé ou feuille d'or. Rétro éclairage LED disponible sur demande.

 Radiators can only be done in the size specified for each model. The colors available on request are : white RAL 9010 and any other RAL color, satinated aluminum or gold leaf finish. Backlighting LED is also available on demand.

ACCESSORI IN CROMO LUCIDO DA INSERIRE SUL RADIATORE:

Art. AC60
Porta salviette da cm 60
Art. AC45
Portasalviette cm 45
Art. AC30
Portasalviette cm 30
Art. AC10
Appendiabito

ACCESSOIRES EN CHROME

Art. AC60
Porte serviette cm 60
Art. AC45
Porte serviette cm 45
Art. AC30
Porte serviette cm 30
Art. AC10
Porte Peignoire


ACCESSORIES CHROME


Art. AC60
Single towel rail cm 60
Art. AC45
Single towel rail cm 45
Art. AC30
Single towel rail cm 30
Art. AC10
Hook




Venice



 I Radiatori possono essere fatti solo nelle dimensioni indicate per ogni modello. Su richiesta possono essere, bianco Ral 9010, Altri colori, alluminio spazzolato o foglia oro. Su richiesta si puo' avere la retroilluminazione led.

 Les radiateurs ne peuvent être faits que dans les dimensions indiquées pour chaque modèle. Les couleurs disponibles sur demande sont : blanc RAL 9010 et toutes autres couleurs RAL, finition aluminium brossé ou feuille d'or. Rétro éclairage LED disponible sur demande.

 Radiators can only be done in the size specified for each model. The colors available on request are : white RAL 9010 and any other RAL color, satinated aluminum or gold leaf finish. Backlighting LED is also available on demand.

ACCESSORI IN CROMO LUCIDO DA INSERIRE SUL RADIATORE:

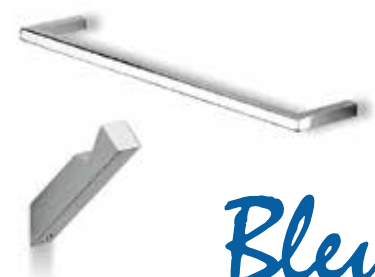
Art. AC60
Porta salviette da cm 60
Art. AC45
Portasalviette cm 45
Art. AC30
Portasalviette cm 30
Art. AC10
Appendiabito

ACCESSOIRES EN CHROME


Art. AC60
Porte serviette cm 60
Art. AC45
Porte serviette cm 45
Art. AC30
Porte serviette cm 30
Art. AC10
Porte Peignoire


ACCESSORIES CHROME

Art. AC60
Single towel rail cm 60
Art. AC45
Single towel rail cm 45
Art. AC30
Single towel rail cm 30
Art. AC10
Hook



■ RD1030 Radiatore Design VENICE


 IL RADIATORE "VENICE" E' PRESENTATO IN FINITURA FOGLIA ORO, NELLA DIMENSIONE DI 1800X 600 MM E SVILUPPA UNA POTENZA DI 420 W. E' DISPONIBILE ANCHE IN VERSIONE ELETTRICA.

 LE RADIATEUR "VENICE" A UNE FINITION EN FEUILLE OR, UNE DIMENSION DE 1800x600 MM ET IL DEVELOPPE UNE PUISSANCE DE 420 W. IL EST AUSSI DISPONIBLE EN VERSION ELECTRIQUE


 THE RADIATOR «VENICE » HAS A FINISH GOLD LEAF, HAS A DIMENSION OF 1800x600MM AND GIVES AN OUTPUT OF 420 W. IT IS ALSO AVAILABLE ELECTRIC.





■ RD1040 Radiatore Design LUNE


 IL RADIATORE "LUNE" E' PRESENTATO IN FINITURA ALLUMINIO SATINATO CON DECORO INCISO, NELLA DIMENSIONE DI 800x800 mm E SVILUPPA UNA POTENZA DI 400 W. E' DISPONIBILE ANCHE IN VERSIONE ELETTRICA.

 LE RADIATEUR "LUNE" » A UNE FINITION EN ALUMINIUM MAT AVEC DECOR CISELE, UNE DIMENSION DE 800x800 MM ET IL DEVELOPPE UNE PUISSANCE DE 400 W. IL EST AUSSI DISPONIBLE EN VERSION ELECTRIQUE

 THE RADIATOR «LUNE» HAS A FINISH SATINED ALUMINIUM WITH A ENGRAVING DRAWING, HAS A DIMENSION OF 800x800 MM AND GIVES AN OUTPUT OF 400 W. IT IS ALSO AVAILABLE ELECTRIC.

 I Radiatori possono essere fatti solo nelle dimensioni indicate per ogni modello. Su richiesta possono essere, bianco Ral 9010, Altri colori, alluminio spazzolato o foglia oro. Su richiesta si puo' avere la retroilluminazione led.

 Les radiateurs ne peuvent être faits que dans les dimensions indiquées pour chaque modèle. Les couleurs disponibles sur demande sont : blanc RAL 9010 et toutes autres couleurs RAL, finition aluminium brossé ou feuille d'or. Rétro éclairage LED disponible sur demande.

 Radiators can only be done in the size specified for each model. The colors available on request are : white RAL 9010 and any other RAL color, satinated aluminum or gold leaf finish. Backlighting LED is also available on demand.

ACCESSORI IN CROMO LUCIDO DA INSERIRE SUL RADIATORE:

Art. AC60

Porta salviette da cm 60

Art. AC45

Portasalviette cm 45

Art. AC30

Portasalviette cm 30

Art. AC10

Appendiabito

ACCESSOIRES EN CHROME

Art. AC60

Porte serviette cm 60

Art. AC45

Porte serviette cm 45

Art. AC30

Porte serviette cm 30

Art. AC10

Porte Peignoire

ACCESSORIES CHROME

Art. AC60

Single towel rail cm 60

Art. AC45

Single towel rail cm 45

Art. AC30

Single towel rail cm 30

Art. AC10

Hook





Via Monte Caminetto 18 int 12/2 - 00060 Sacrofano - Roma - Italy

www.bleuprovence.it

Email : info@bleuprovence.it

Tel : +39 331 920 4888

Fax : +39 06 9083050